

Dee Estuary Coastal Coordination Project



Our Dee Estuary
Caru AberDyfrdwy

Supported by the
Championing Coastal
Coordination Fund



Dee Estuary Coastal Coordination Project

Our case study project:

Testing and trialling the development of a cross-border Local Coastal Partnership in order to establish a collaborative approach to coordinating local improvements across the Dee Estuary.



Our Dee Estuary
Caru AberDyfrdwy

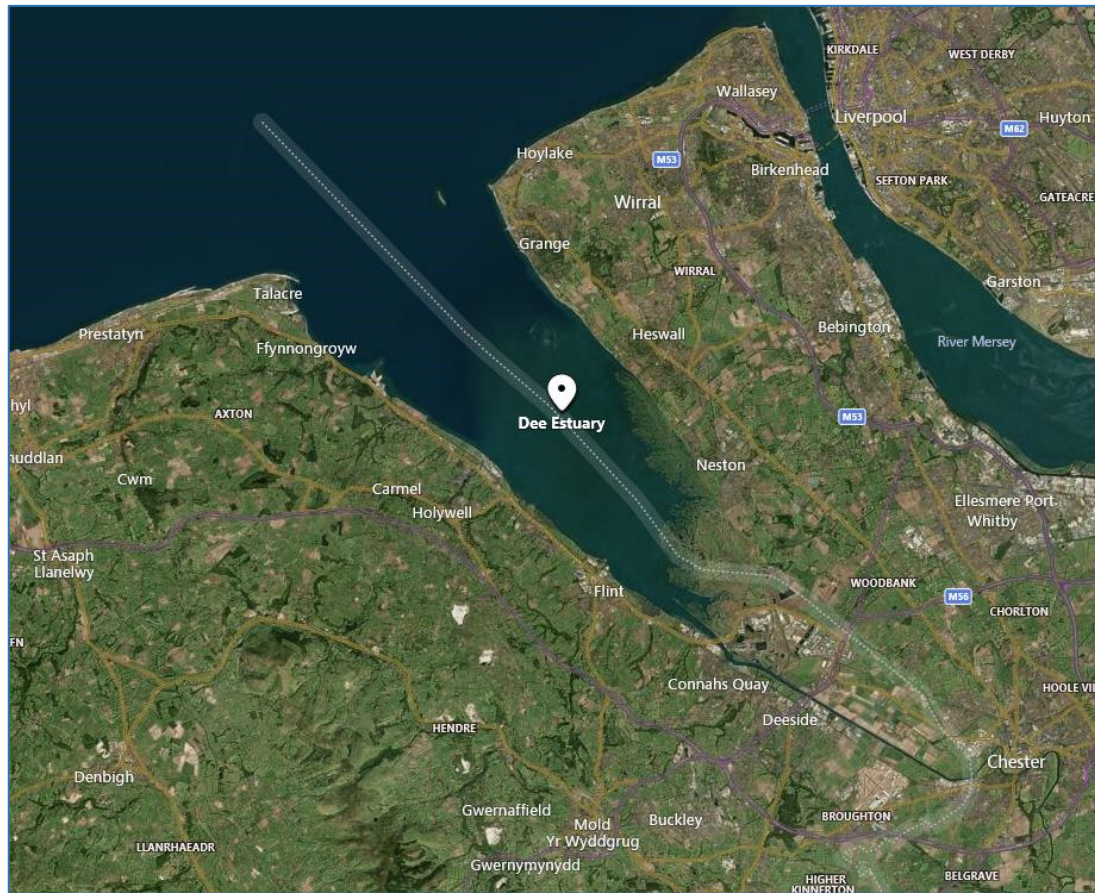


Cheshire
Wildlife Trust

Supported by the
Championing Coastal
Coordination Fund



Dee Estuary Coastal Coordination Project



Our Dee Estuary
Caru AberDyfrdwy



Cheshire
Wildlife Trust

Supported by the
Championing Coastal
Coordination Fund

Why the project is needed

- **Montreux Record.**

The Dee Estuary is one of only two UK sites on the Montreux Record, an 'at risk' register of international wetlands. The 1990 UK National Report stated that *“the site’s multiple ownership, crossing county and national boundaries, hampers any comprehensive planning”* and referred to a series of specific pressures liable to affect the site adversely.



Our Dee Estuary
Caru AberDyfrdwy



Cheshire
Wildlife Trust

Supported by the
Championing Coastal
Coordination Fund



Why the project is needed

- **Disconnected Governance.**

The Dee Estuary is a single functioning ecosystem administered by four local authorities and falling under the jurisdiction of two countries. A stakeholder workshop held in 2019 which focused upon governance of the Dee Estuary concluded the following main points for weaknesses and threats to the Dee Estuary:

- Lack of communication between groups and local authorities.
- No stakeholder gateway.
- No single management strategy.
- Lack of planning and collaboration across the estuary.
- Activities/issues not considered on an estuary-wide basis.
- Lack of structured consultation available in the estuary for development.



Our Dee Estuary
Caru AberDyfrdwy



Cheshire
Wildlife Trust

Supported by the
Championing Coastal
Coordination Fund



Why the project is needed

A cross-border collaborative approach needs to be established to:

- Deliver the recommendations set out in the Ramsar Bureau Report, restoring habitats and removing threats to the estuary to successfully remove the Dee Estuary from the Montreux Record.
- Improve the governance of the estuary, better connecting decision-makers and stakeholders across sectors, so that it is managed as one landscape and its ecosystem services are maximised.
- Improve stewardship of the estuary, spanning sectors and engaging at a range of levels to strengthen capacity and capability.



Our Dee Estuary
Caru AberDyfrdwy



Cheshire
Wildlife Trust

Supported by the
Championing Coastal
Coordination Fund



Project activities

Test and trial the WWF UK Seas Marine Protected Area Compass with stakeholders as a tool for measuring and monitoring the impact of improved coastal coordination within a cross-border estuary.

- Introduce the tool and test and trial it as a mechanism for monitoring and evaluating the effectiveness of establishing an improved collaborative approach to coordinating local improvements across the Dee Estuary.
- Online survey disseminated. Included questions on how the survey could be improved and be further tailored to the Dee Estuary.
- Results will be analysed in March.



Our Dee Estuary
Caru AberDyfrdwy



Cheshire
Wildlife Trust

Supported by the
Championing Coastal
Coordination Fund



Project activities

Engage with decision-makers and stakeholders to scope out an agreed cross-border governance framework for the Dee Estuary.

- One-to-one interviews with stakeholders and online workshops.
- Questions around current coastal coordination, challenges and needs as well as potential benefits and value of improved coordination.
- Terminology also discussed: governance, management, coordination and collaboration.
- Workshop session today that will feed in to the results of the project.



Our Dee Estuary
Caru AberDyfrdwy



Cheshire
Wildlife Trust

Supported by the
Championing Coastal
Coordination Fund

