

North Western Inshore Fisheries and Conservation Authority

Challenges to managing sustainable fisheries and a
healthy marine environment



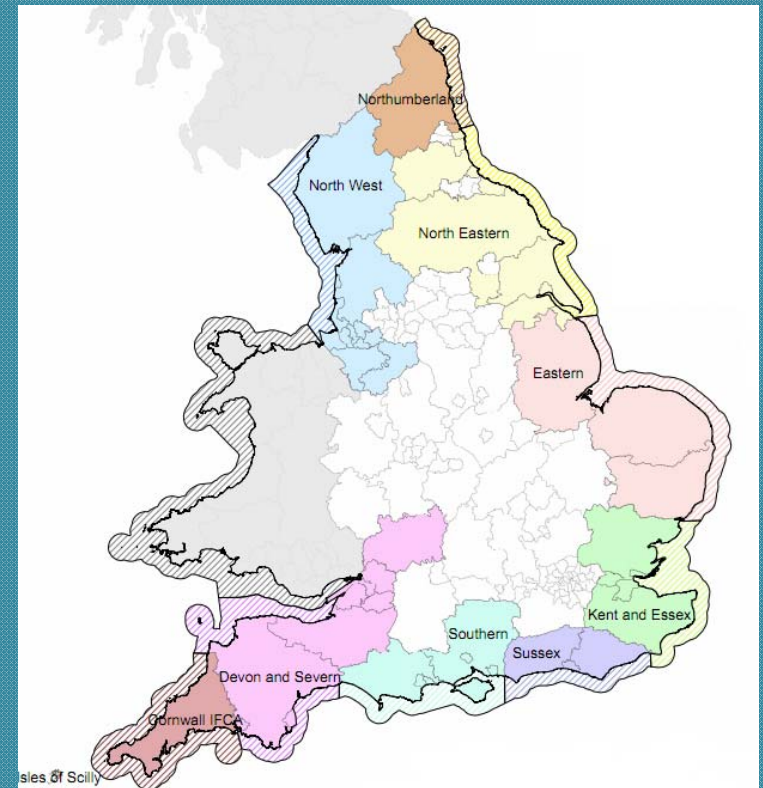
Overview

- NWIFCA history and remit
- Responsibilities
- Examples of sustainability challenges
 - Ribble cockles.
 - Project Inshore
 - Bass Nursey

Inshore Fisheries and Conservation Authorities (IFCAs)



- IFCAs came into being on April 1st 2011 under the Marine and Coastal Access Act (2009), replacing Sea Fisheries Committees (SFCs)
- 10 around England. Wales and Scotland marine management devolved.



IFCA National Vision



IFCAs will lead, champion and manage a
**sustainable marine environment and
inshore fisheries**, by successfully securing
the **right balance** between social,
environmental and economic benefits to
ensure healthy seas, sustainable fisheries
and a viable industry

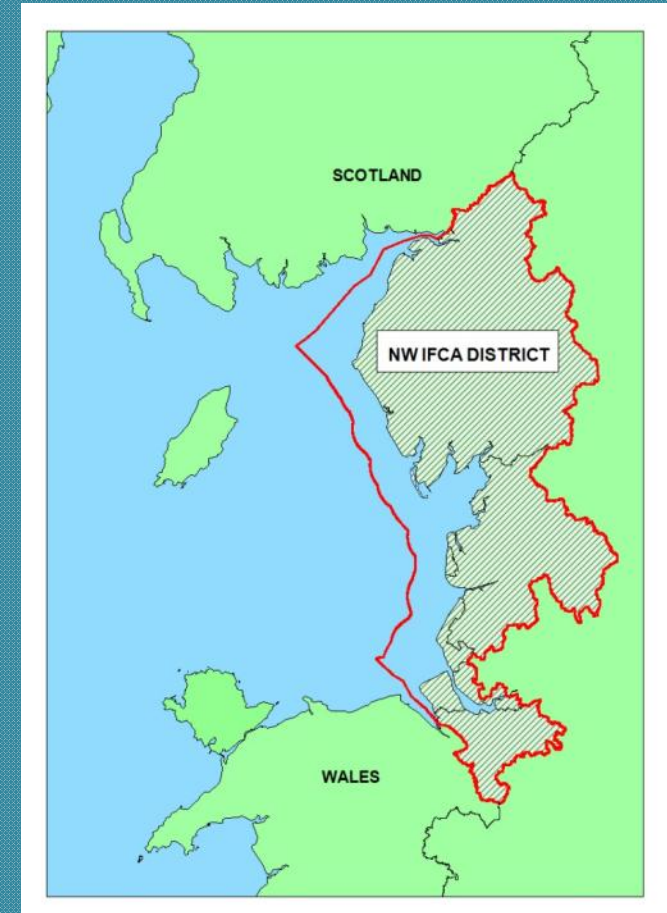
IFCA Duties under the MACAA

- Work in Partnership with Defra, MMO, NE, EA and other agencies
- Manage marine resources sustainably
- Balance all (not just fishing) interests
- Protect and recover the marine environment using byelaws where needed
- Further the objectives of Marine Conservation Zones (MCZs)
- Develop fisheries

The NWIFCA



- Amalgamation of
 - North West and North Wales Sea Fisheries Committee
 - Cumbria SFC
- From the Welsh to Scottish borders, out to 6 nautical miles.
- Powers extend up to local authority boundary lines
- Run by a committee
 - 30 Members including local authorities, partner organisations, members of the public (appointed by MMO)



NWIFCA Responsibilities



- Regulate NW fisheries in a sustainable manner
- Make byelaws for local management
- Enforce National and EU legislation
- Balance marine environmental and conservation needs
 - Two-thirds district has designation. Could increase with MCZs

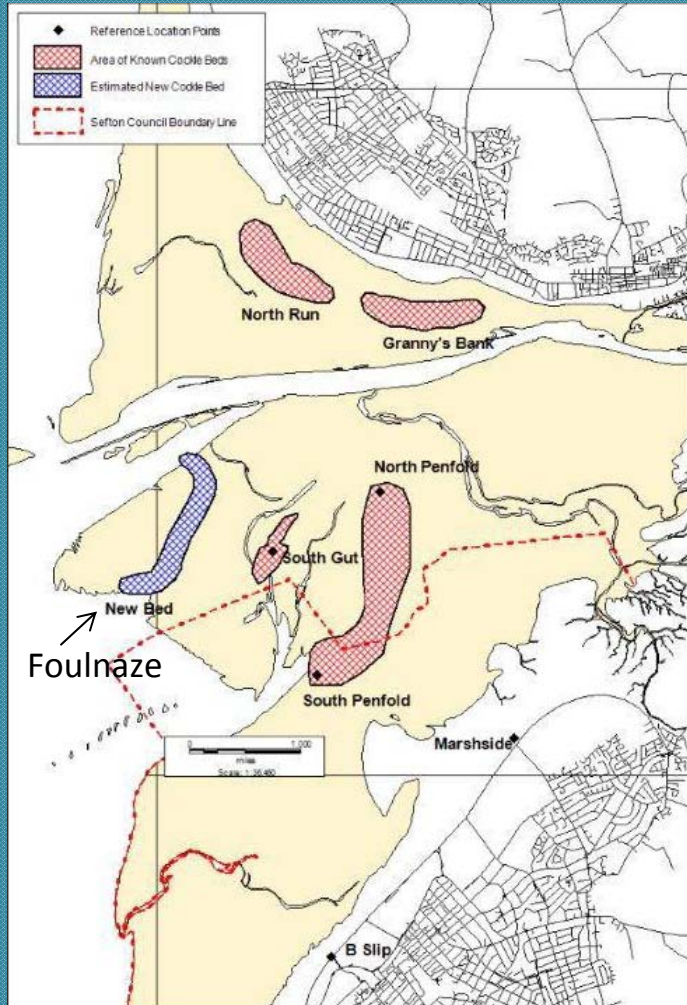


Management Challenges



- Wide and varied stakeholder base
- Enforcement
- Balancing competing interests
 - Develop fisheries and conserve environment
- Uncertainty of future legislation – CFP, MSFD, MCZs

Sustainability Challenges



- Ribble Estuary – Foulmaze Cockle Bed
- Public fishery opened 1 Sept 2011
- Over 8000 ton cockles
- Worth ~£7-8m

Ribble Cockles

- In two months, lifeboat called 26 times
- Disruption to local Lytham community –litter, noise, boats stolen
- Emergency closure from the Minister on Health and Safety ground – Nov 7
- 1700 tons left (& lots of undersize)



2012 Foulnaze Fishery

- Problem – how to develop a viable fishery, keep local community happy, ensure low environmental impact.
- Multi-agency group to work out improvements
 - Incl. local councils, MCA, Police, MMO, NE, GLA
- Many considerations
 - Ribble designations – Impact assessments
 - Daylight hours
 - Tides



- Open during August with a special conditions
 - Monday-Thursday during daylight
 - Permit required
 - One access point
 - No cockles landed at shore
 - Fishermen paid for toilets and slipway improvements
- TAC of 750t reached after 9 days – approx 120 fishermen
 - Worth over £1m at first sale



“Byelaw 3”

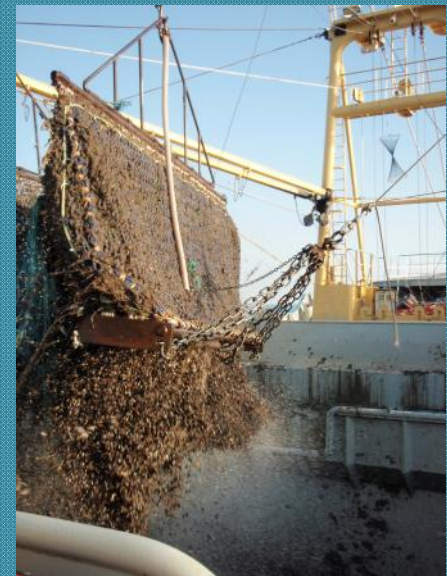
- *‘Permit to fish for Cockles and Mussels’*
 - Improves NWIFCA ability to manage shellfish fisheries.
 - Requires fishermen to be professionals and safety trained
 - Boats to have safety standards
 - £500 annual fee
 - Came into force August 23 2012



Project Inshore



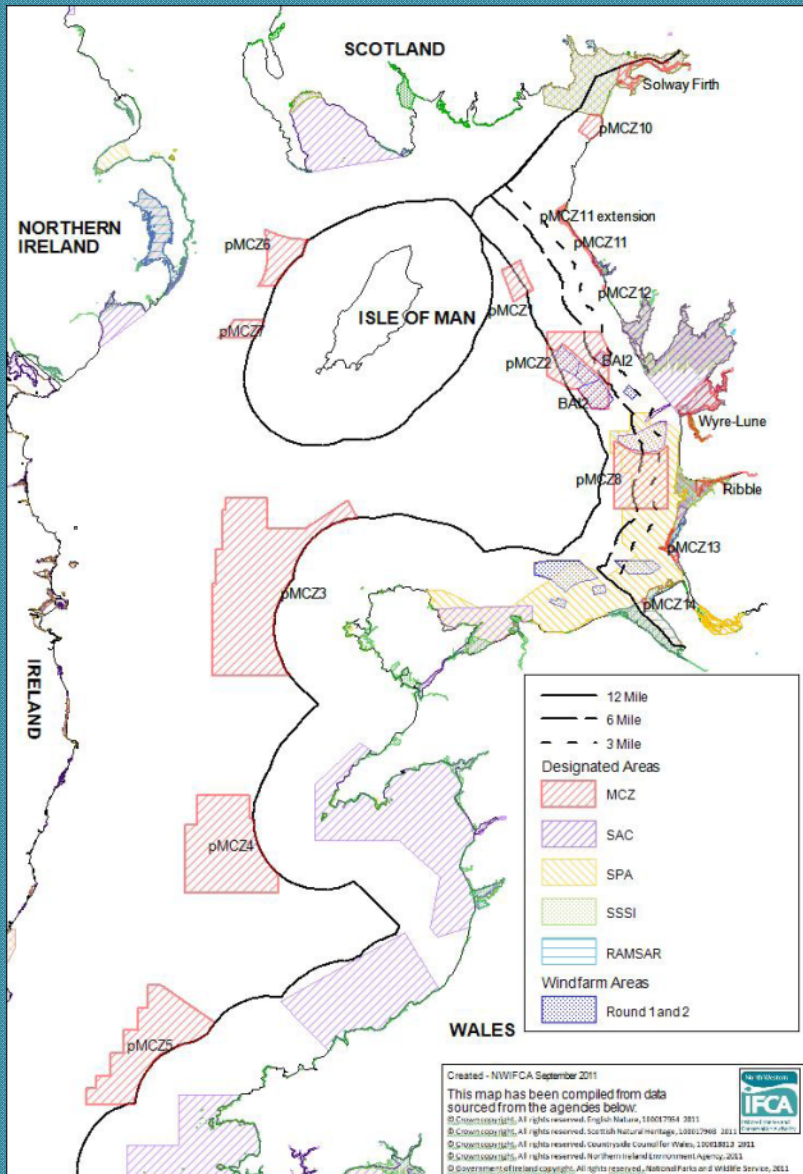
- Project in partnership with the Marine Stewardship Council to assess sustainability of UK fisheries and inform management.
- Fisheries will go through MSC Pre-Assessment process
- Sustainability reviews - unsustainable fisheries can be addressed with revised management.



Future Challenges

- **Heysham Bass Nursery**
 - Nursery area around Heysham power station established 1999 - certain baits and any fishing from boats prohibited.
 - Major enforcement challenges
 - Proposed Byelaw to prohibit all bass fishing





- **Marine Conservation Zones management**
 - Many competing interests
 - MCZs that go over 6 mile boundary...
 - Enforcement challenges over such a large area

Thank you!

Alasdair Lindop

a.lindop@nw-ifca.gov.uk

