

Tortoreto Municipality Territorial Sustainability



Tortoreto Municipality Territorial Sustainability



Tortoreto Municipality Territorial Sustainability

Programmatic guidelines of the City of new PRG Tortoreto (From the point of view of sustainability Urbans)

The new urban planning of the city of Tortoreto pursues general solution of the direct impacts and exploitation of sustainable values traceable in it, ranging from strictly the Urban-Regional Socio-Economic ones.

The new scheme is based on the conversion planning and redesign of strategic areas, suitably interconnected by new infrastructure mode, the Political-Administrative indispensable condition, which puts the city within the urban competition, no longer based on the logic of mere satisfaction of the standard (imposed by the current zoning laws), but as a city of services of territorial and sustainable tourism.

In addressing these issues, we are availing it self of sustainability indicators developed whitin the project Sustain, where the Province of Teramo has played a devisive role in the policies.

Use of these indicators, we hope to be able to envisage a model of alternative development of our country that we could reassume in a few key points:

Tortoreto Municipality Territorial Sustainability

- A) Anticipation of intervention, recovery and rehabilitation of urban and building sectors abandoned or degraded.
- B) Equitable distribution of public-private.
- C) Strengthening public services in terms of quality and quantity.
- D) Development of coastal and river areas for tourism, recreative and social.
- E) Overall improvement in the quality of living and specifically with the use of innovative technologies (bio-architecture, energy saving, micro-climate)
- F) Development, regulation of extra-urban and landscape, protection, in its values-Historic Agricultural and Environmental Economics.

Tortoreto Municipality Territorial Sustainability

G) Last point of the program, but the most important is the establishment of an integrated policy for the protection and rehabilitation (for other already), Geomorphological and Hidrogeological land and reduction and mitigation of related risks, having already suffered in our area past serious disruptions due not least to the mismanagement of land resources.

Ultimately, the new schedule should be an essential tool for the definition of environmental sustainability, to which all efforts will be directed to the creation and construction of a graph of the objectives.

This is also dictated by the fact, that these sustainability objectives, by definition multi-sectoral are by their very nature, policy objectives belonging to governance, incorporating themselves as different evaluation criteria, require to be defined an ethical system of values.

Sostenibilità del territorio del Comune di Tortoreto

At this point, I can say that the tool supplied to us by European Project Sustain, can be crucial to start this series of strategic environmental assessment, referring to this study, the plural dimension of sustainability.

Finally, I can not remember that the objects of this new planning of the City of Tortoreto can only be the result of a vision of the future which whit related aspects of different nature (environment, development, etc..) can' t exclude the direct participation of citizens and local economic forces in order to follow this ambitious project.

Tortoreto Municipality Territorial Sustainability

Implemented Strategies

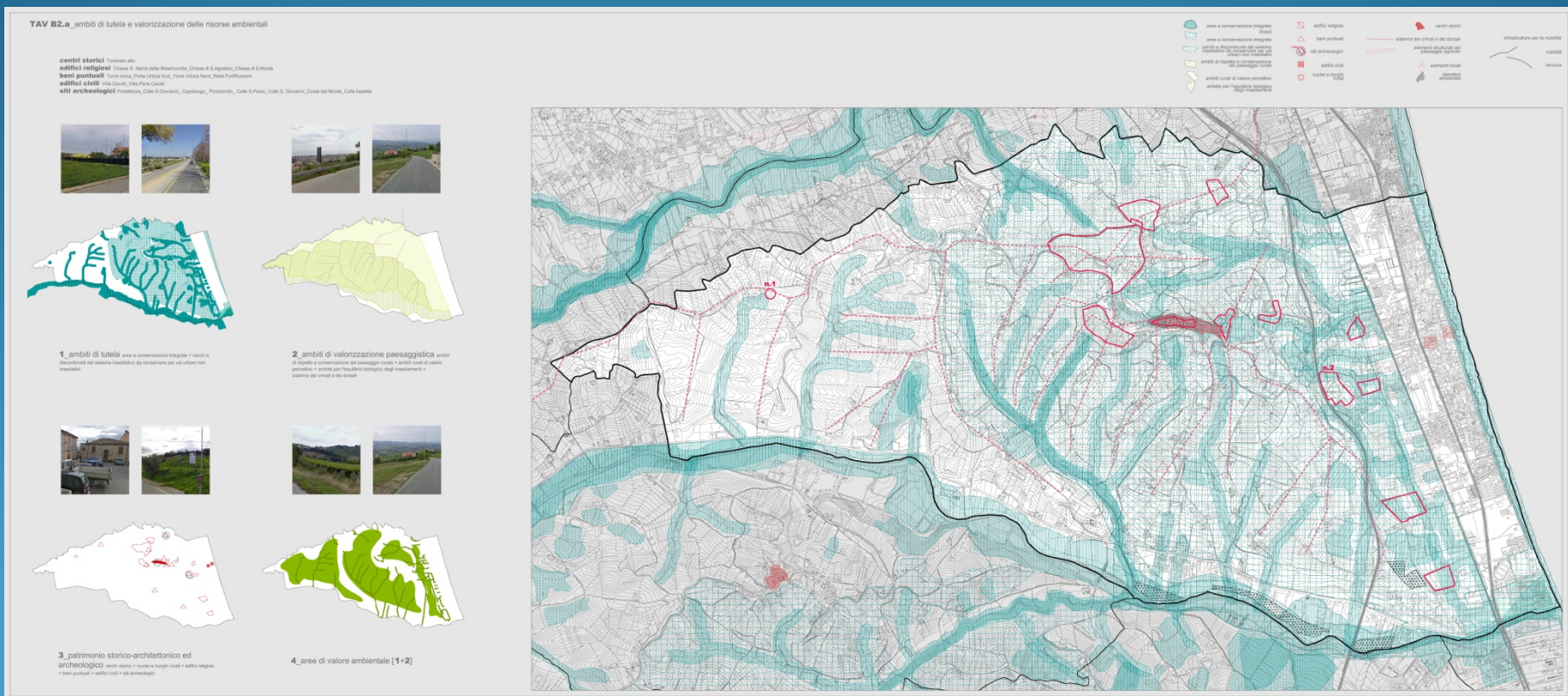
Protection Environments and Environmental Resources Improvement (B2.a)

Table B2.a represents an environmental, historic and architectural “resources map” to be protected, improved and promoted by our plan. From this point of view we must remember that Tortoreto territory belongd to an evolving environmental/metropolitan system which is walking a fine line. The coast immediate vicinity means sensitivity to a lot of contradictory occurrences: land “consumption”; traffic increase; the growth of homes that are occupied for only part of the year; production and property market, which is leaded towards hill tourist centres; consequently there is an identity crisis of historic hill centres and tourist proposal which is more and more interested in environmental quality and cultural assets. Our work is a “census” of cultural/environmental/landscape resources to be protected, enhanced and put in dynamic relationship with a well-proportioned growth of coastal anthropological and economic streams. In particular the table shows:

- Whole protection environments, conservation areas to be considered from the point of view of discontinuous settlement systems;

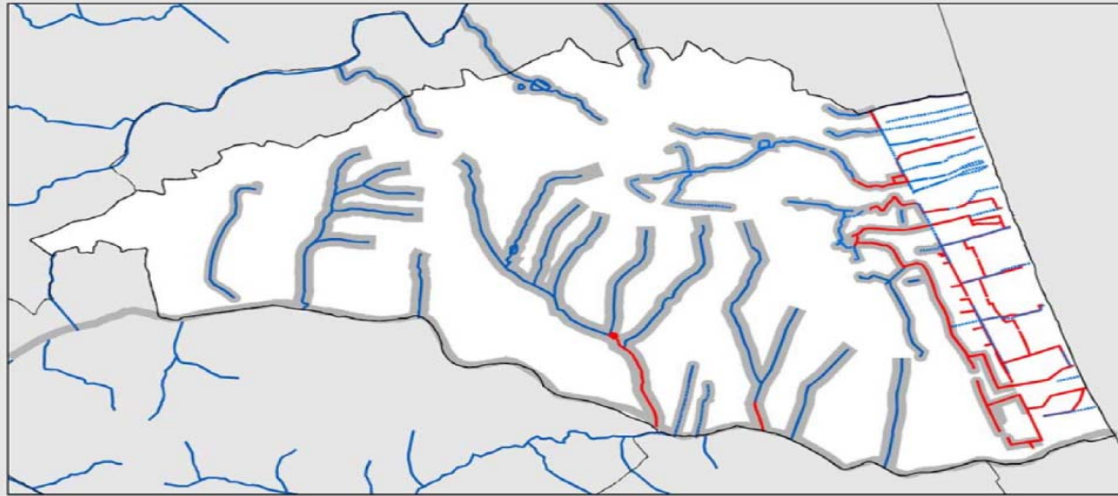
Implemented Strategies

- Landscape valorisation environments, where we must protect, above all, country landscape with its roads, crests, etc);
- Historic-architectural asset developing elements: historic centres, rural villages, religious building and goods, archeological sites, and so on;

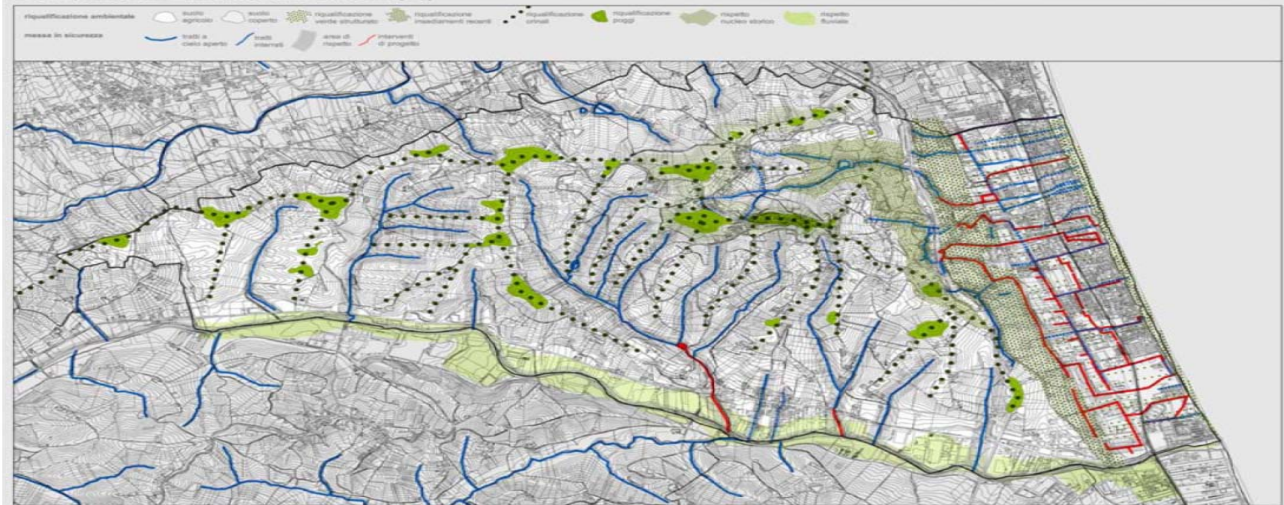


Tortoreto Municipality Territorial Strategies Implemented Strategies

2_messa in sicurezza del territorio



azioni riqualificazione ambientale e messa in sicurezza [1+2]

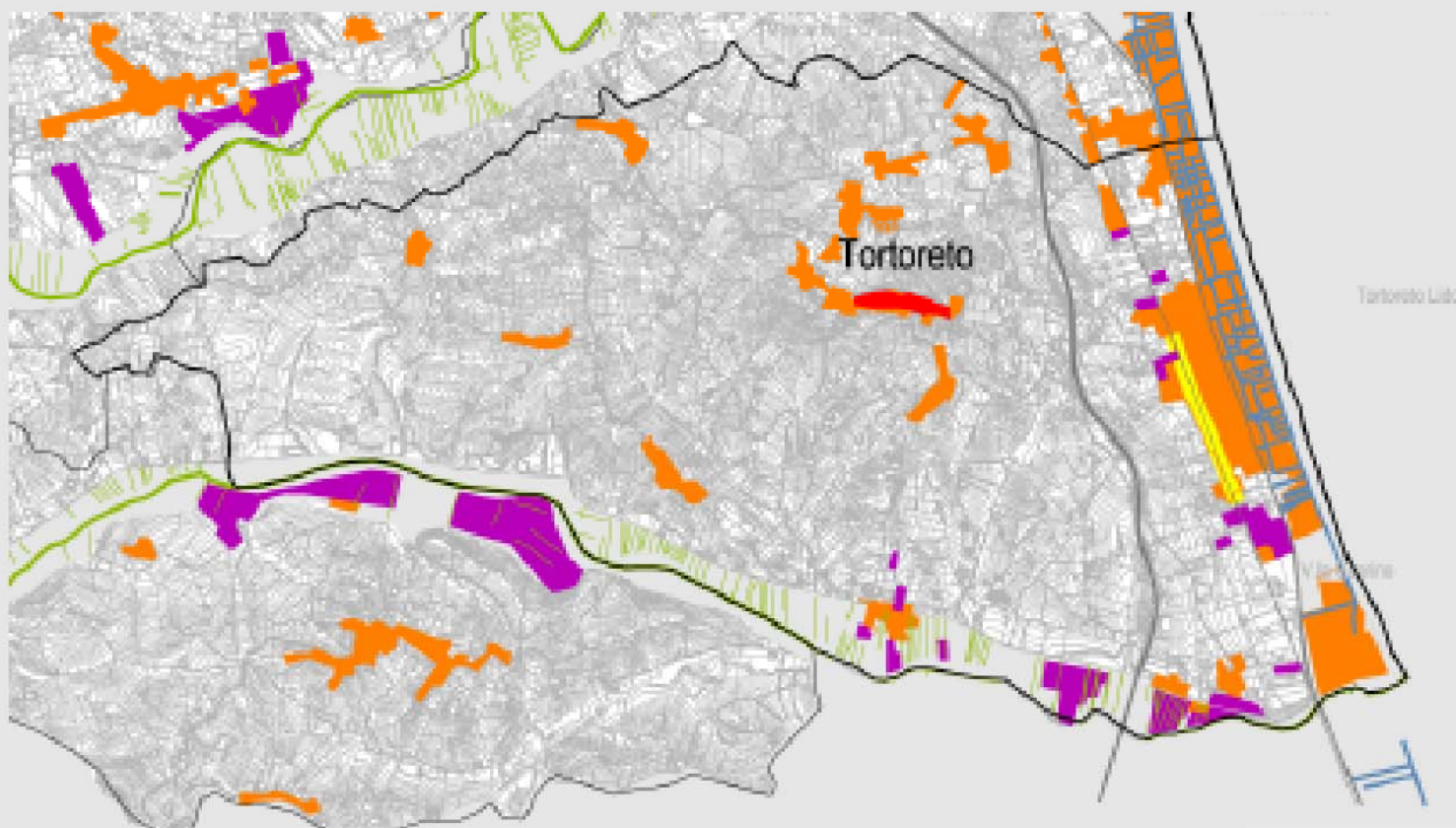


Tortoreto Municipality Territorial Sustainability

TAV B1.c_paesaggi



paesaggi_materiali



Tortoreto Municipality territorial Sustainability

Landscape (B1.c)

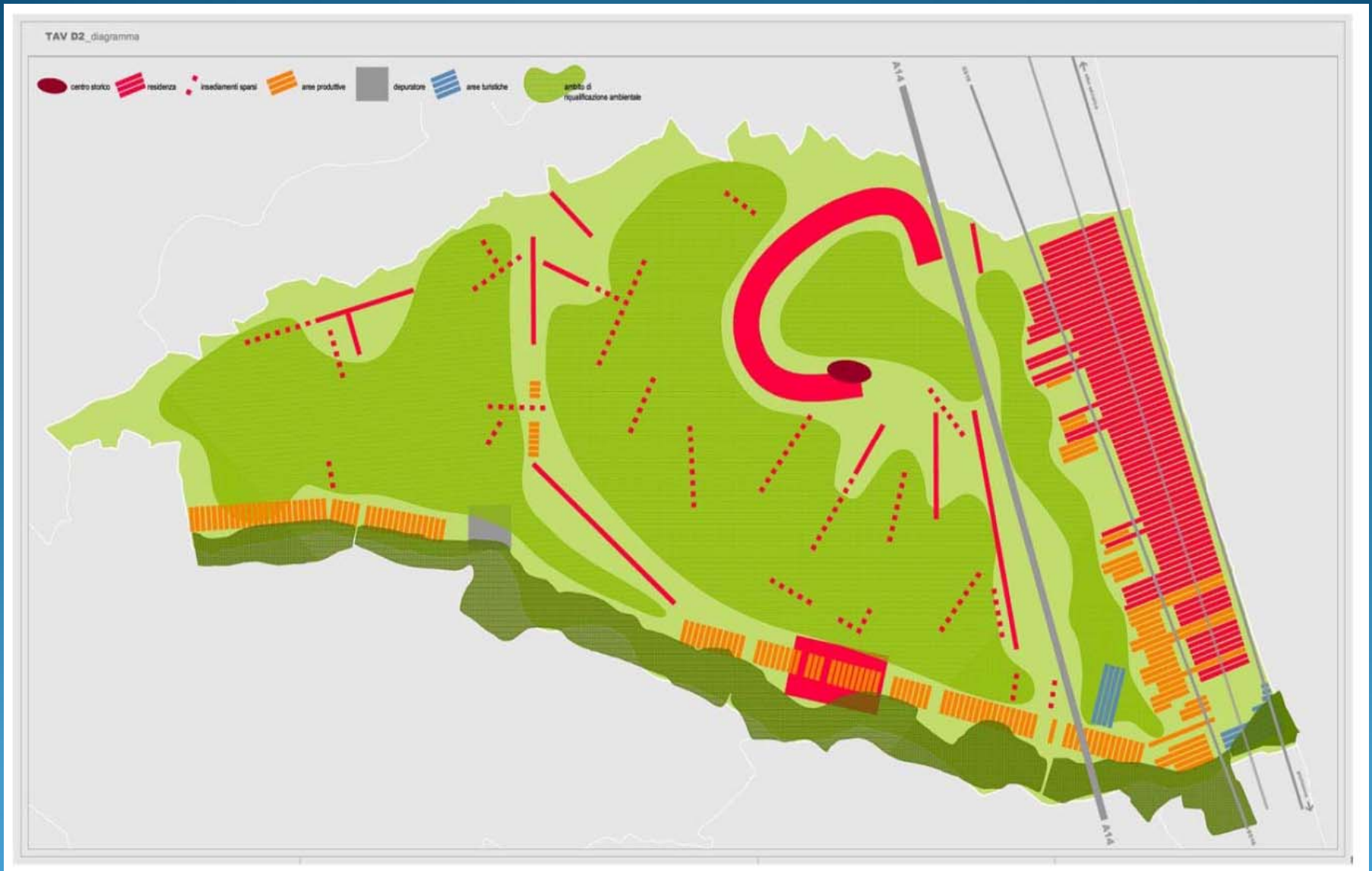
The main systems of the area: the coast, the range of hills and valleys is also the identification of the various matrices of the territorial settlement system at different times and in different ways resulted in landscape of settlement identity.

These landscape, over times, have undergone significant changes and, especially recently, whit irrepressible settlement process generated along the coast by the emergence of the model of mass seaside tourism and the phenomenon of urban sprawl (dispersion concerning settlement).

Phenomenon that has acquired characteristics and sizea within the various territories and that, ultimately generating the urbanization of rural aresa, has challenged the traditional settlement patterns gradually changing the caracter of the identity of places and landscape.

The purpose of the table is to show the membership of the town of Tortoreto to one or more of these “landscape”, and therefore make clear that in many respects the ability of the planning of the territory also dependens on the ability of the planning of the territory also depends on the ability to understand the relationships between the municipality and these larger systems and then to harmonize the interventions that the plan with plans and programs to a larger scale.

Tortoreto Municipality Territorial Sustainability



3.1.b Guiding Framework

Table D2 may be defined as a scenario's table where has been established a relationship between acquired data and collected information in order to obtain a summarizing and schematic image - the so-called Guiding Framework – of the municipality future overall territorial shape. Data are understandable: Tortoreto's coastal settlement will become stronger and strengthened and it will set up as a new and dynamic municipal “centre” with the Salinello Valley specialized settlements. Its old town will find its roots and will growth in urban quality and landscape.

From this point of view the adriatic metropolitan tissue will strengthen in relationship with valley urbanization and it must be equalized with the increase in value of its historic centre, the preservation of farming landscape and northern valley, by recovering urban framework. The strategy would be that of keeping intact farming landscape, its environmental value, the sustainable recovery and reclamation of the existing building asset.