

The logo consists of the word "SUSTAIN" in white, bold, sans-serif capital letters. It is set against a dark grey rectangular background. To the left of this rectangle is a vertical bar with a yellow top section and a light blue bottom section. The entire logo is positioned in the top left corner of the slide.

**SUSTAIN**



# THE USE OF SUSTAIN'S INDICATORS IN THE REGIONAL COORDINATION PLAN OF PROVINCE OF TERAMO

**DELIVERING SUSTAINABLE COASTS**

**Sustain International Conference  
Southport (UK) – 18/19 Sept. 2012**



**Province of Teramo  
Council Member  
Architect Vincenzo Falasca**



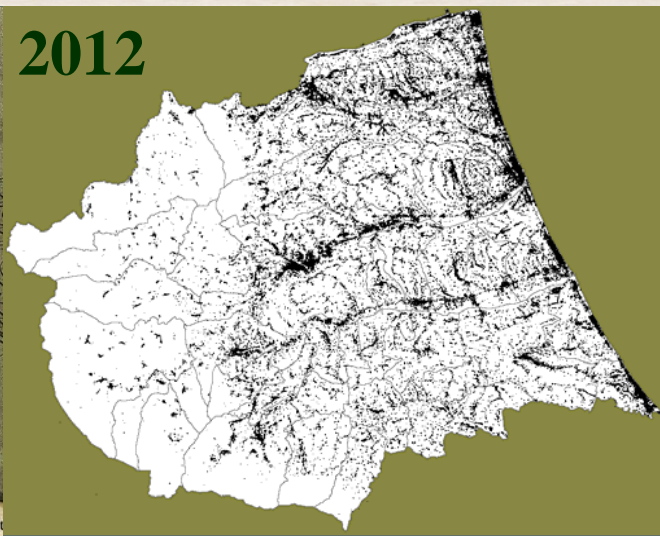
# SUSTAIN

## THE USE OF INDICATORS OF SUSTAIN THE PLAN REGIONAL COORDINATION OF PROVINCE OF TERAMO

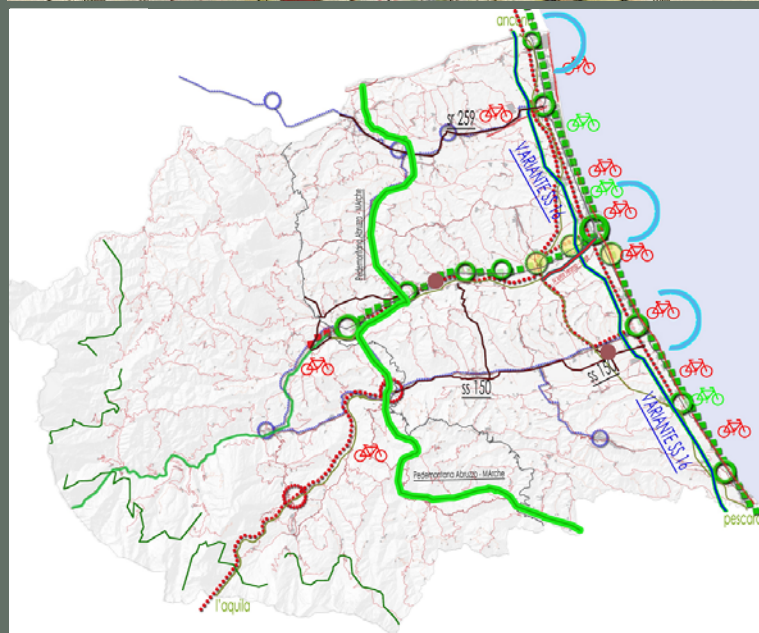




### The settlement structure



### The structure of practicability



#### Dotazione di strumenti urbanistici comunali

	% territorio 2007	% popolazione 2007
Totale Comuni con P.R.G./P.R.E.	86,70%	99,00%
Totale Comuni senza P.R.G./P.R.E.	22,38%	1,00%

**Population: 330.000**

**70% in the coastal system**

**40% in 7 Municipalities of the coast**



## REGIONAL PLAN OF PROVINCIAL COORDINATION

### Objectives

- sustainability of transformations;
- elevation of environment and living quality;
- territorial rebalancing and integration;
- search for forms of low-impact development.



### Actions

- defence of natural resources quality;
- ecosystem balance;
- containment of land consumption;
- defence of protected natural areas;
- environmental rehabilitation of degraded areas.





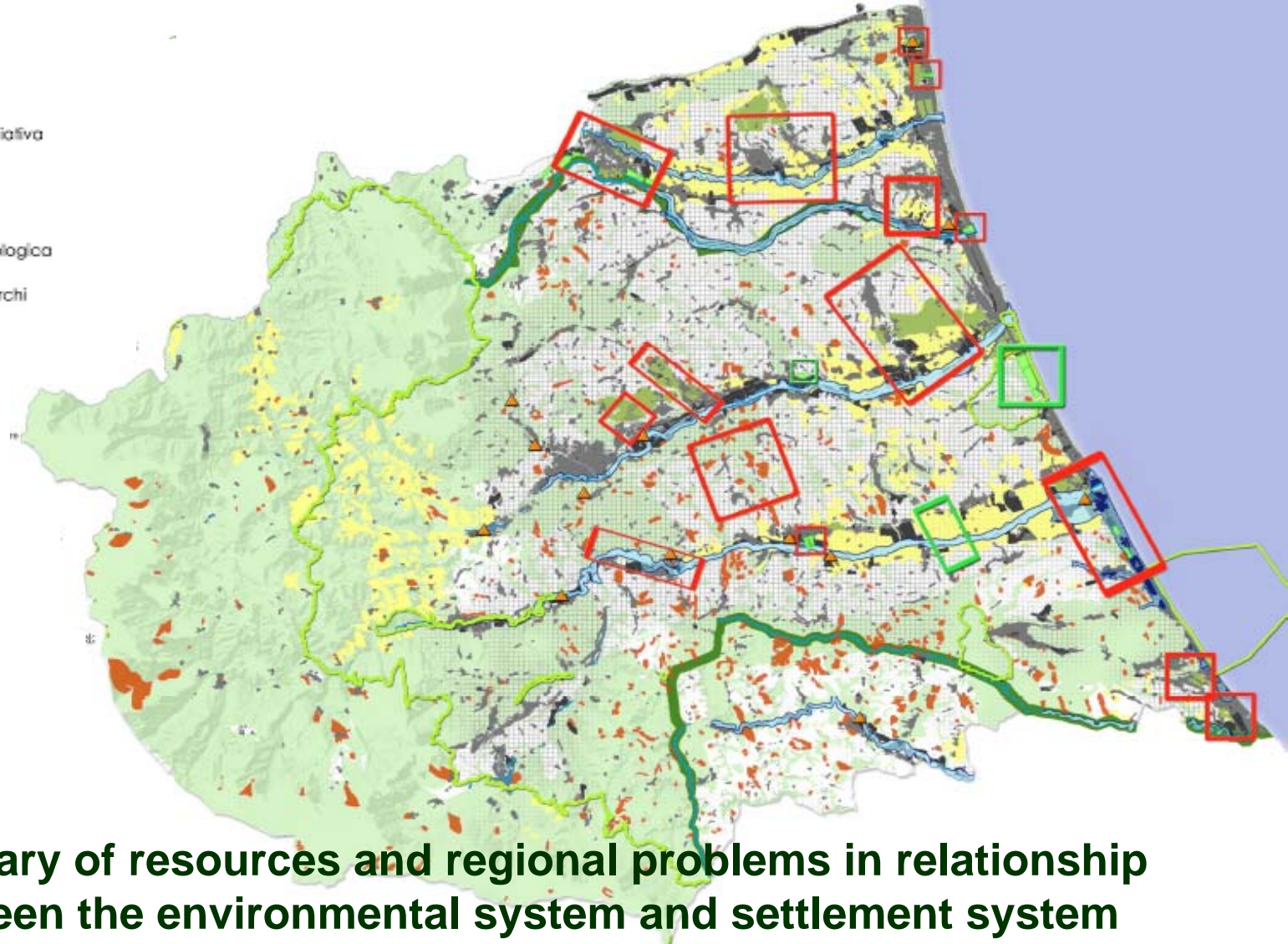


### Conflitto

-  Frange urbane
-  Aree della diffusione insediativa

### Permeability

-  Varchi di connessione ecologica
-  Rete delle riserve e dei parchi








**Summary of resources and regional problems in relationship  
between the environmental system and settlement system**








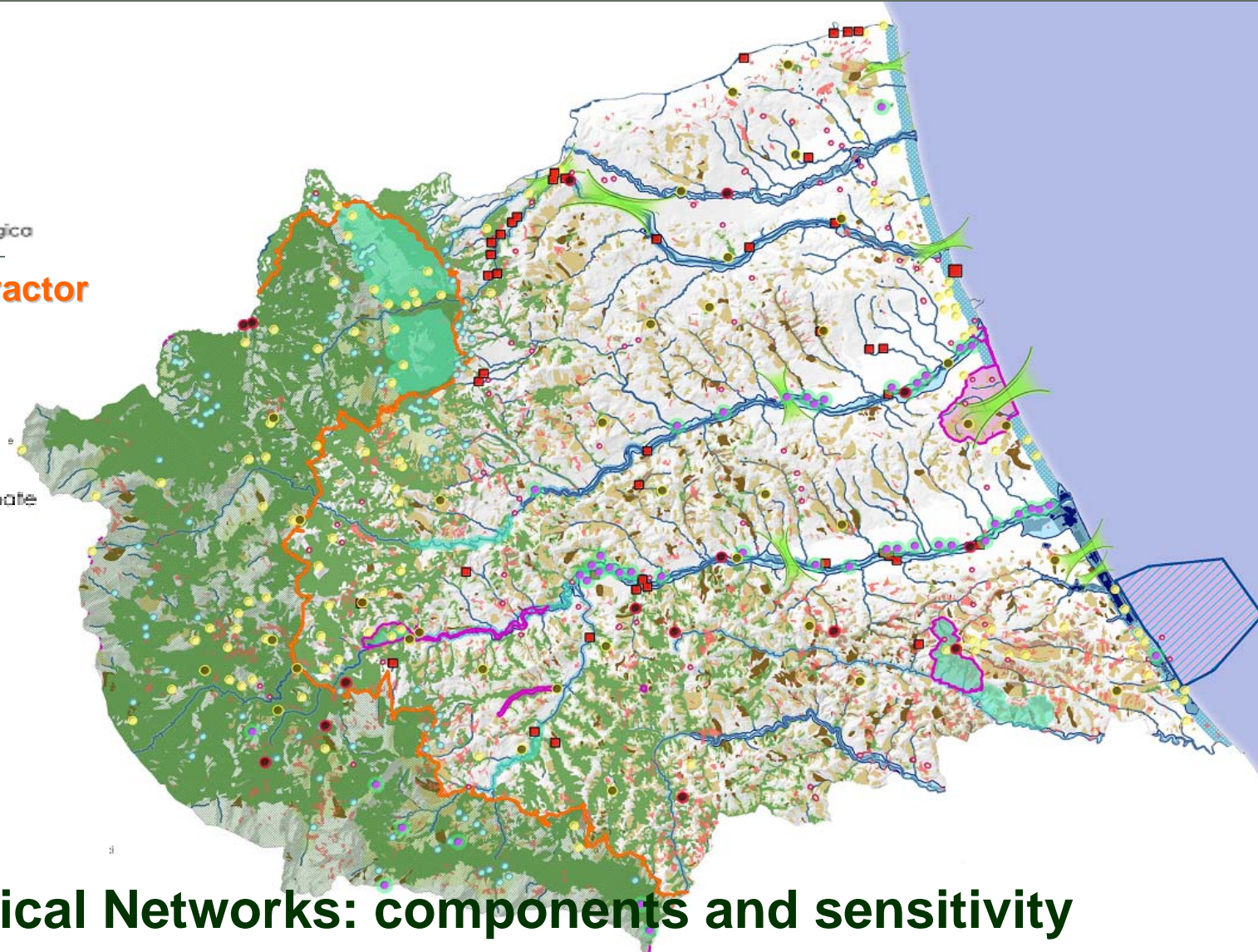


### Components

-  Corsi d'acqua principali
-  Corsi d'acqua secondari
-  Sorgenti
-  Aree Boscate
-  Varchi di connessione ecologica

### Environmental detractor

-  Discariche dismesse
-  Discariche abusive
-  Detrattori ambientali
-  Aree estrattive
-  Aree agricole abbandonate



**Ecological Networks: components and sensitivity**






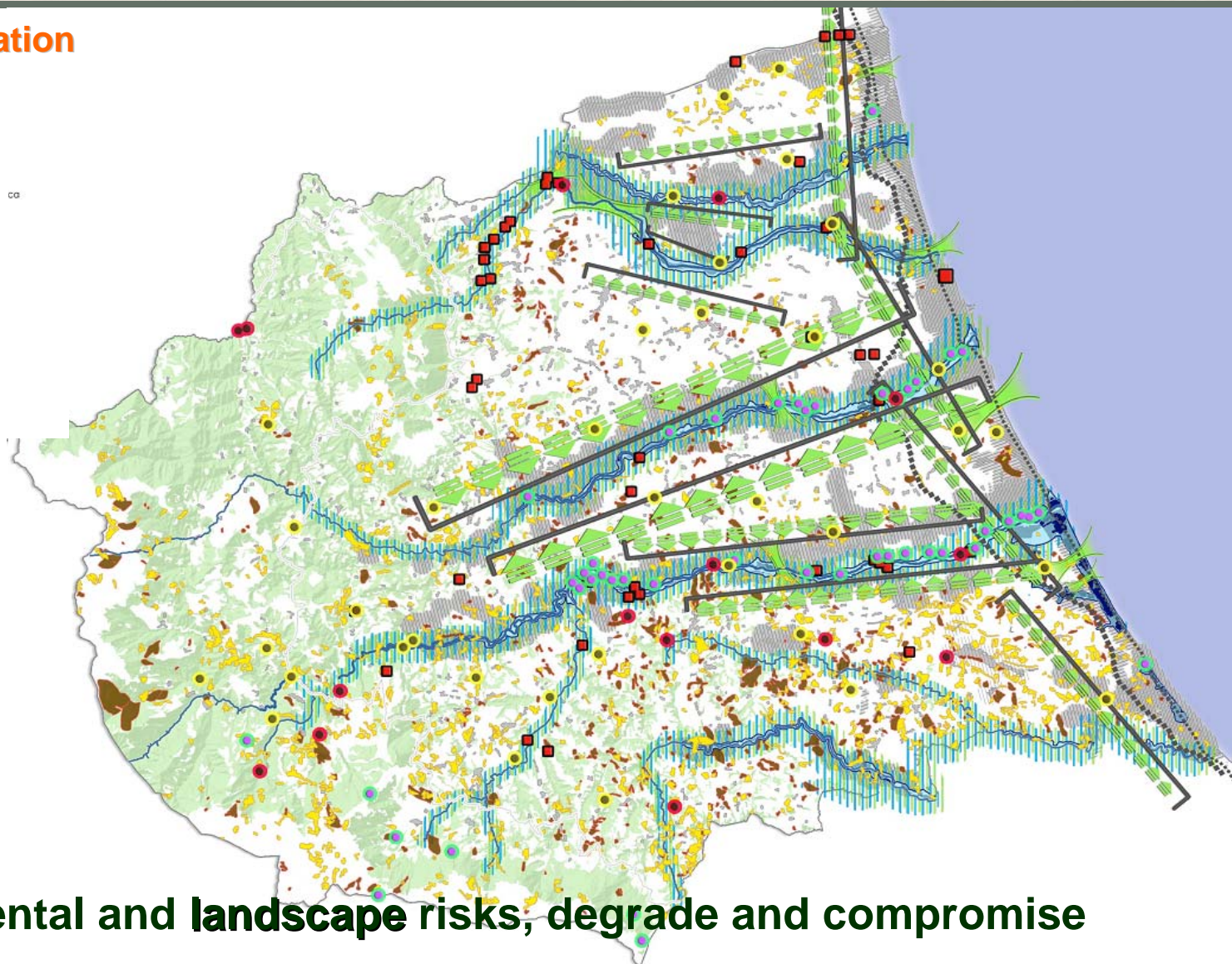


### Ecological fragmentation

-  Tessuto insediativo compatto
-  Autostrada
-  Infrastrutture principali
-  Assenza di connessioni ecologiche
-  Aree agricole abbandonate

### Enviromental detractors

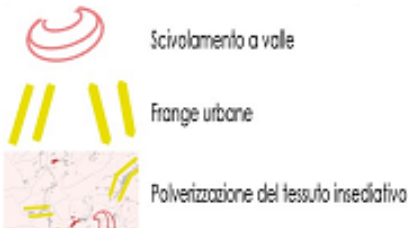
-  Discariche abusive
-  Detrattori ambientali
-  Aree estrattive



**Environmental and landscape risks, degrade and compromise**

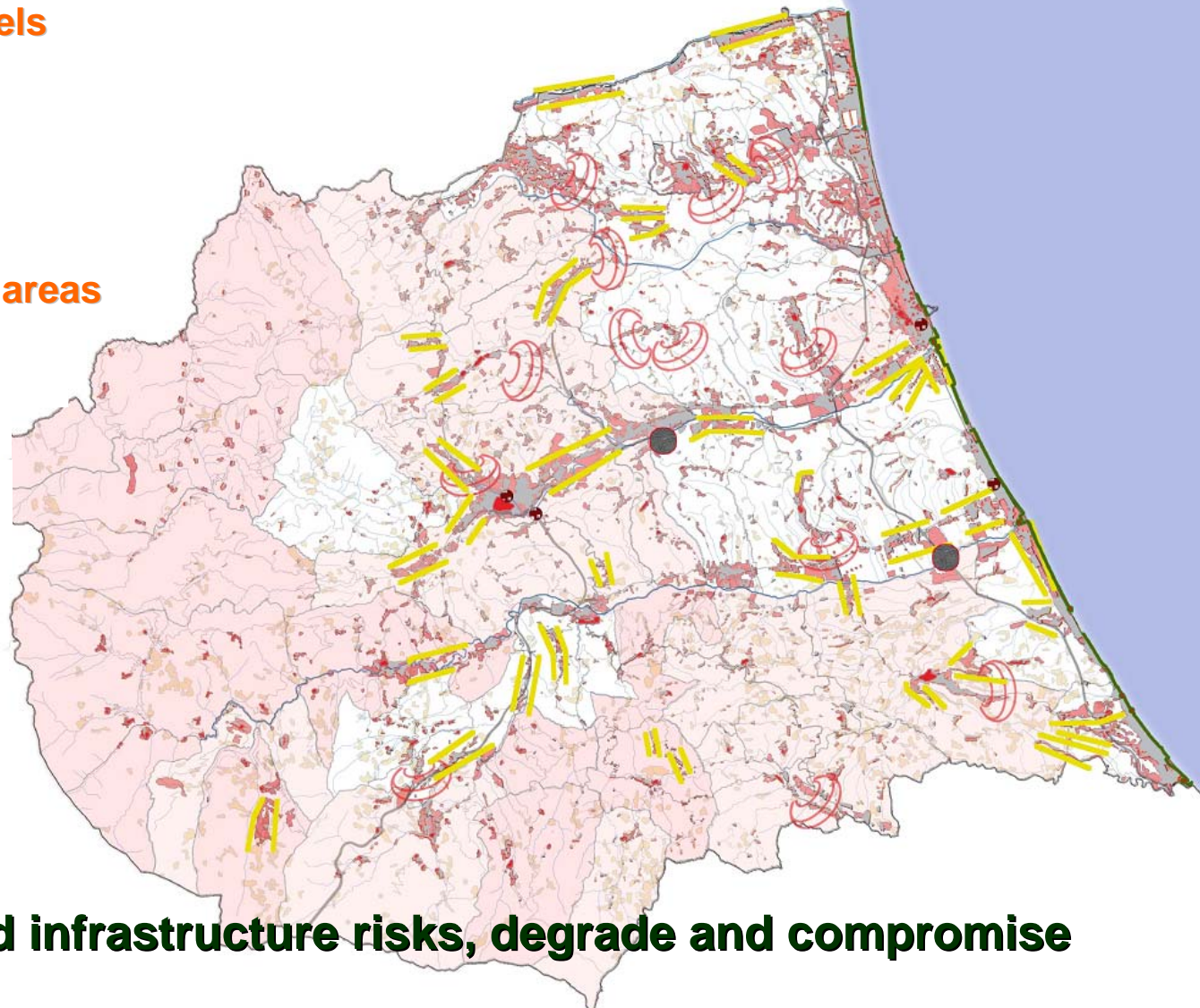
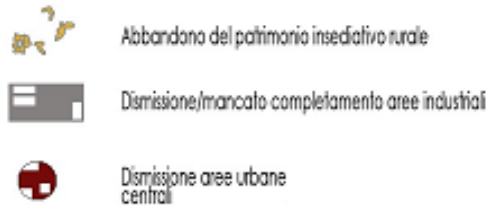


### Impaired settlement models



### Disposal rural and urban areas

Dismissione di aree rurali, periurbane, urbane



**Settlements and infrastructure risks, degrade and compromise**





## TERRITORIAL CRITICAL PTCP

## SUSTAIN'S INDICATORS

### Hydrogeological risks

- people and assets at risk in coastal areas
- coastal erosion and accretion
- length of artificially defended coastline

### High land consumption and high diffusion settlement

- urban waste and land recycling
- area of built-up land
- bioedilizia
- planned area

### Low quality of tourism

- bathing water quality
- beaches and marinas with eco-label awards
- recreational boating
- volume of port traffic





## TERRITORIAL CRITICAL PTCP

## SUSTAIN'S INDICATORS

### Fragmentation of the ecological network

- green areas
- change of condition of coastal and marine habitats and species

### Poor use of Reserves and Parks

- area of land and sea protected by statutory designations

### Insufficient water quality

- quality of sediments and/or biota
- ecological status of transitional and coastal waters
- coastal rivers quality
- amount of coastal, estuarine and marine litter



# SUSTAIN



THANK YOU FOR YOUR ATTENTION

