



Geo E.O.S.

Environmental Observatory System

SUSTAIN



Ass. All' Ambiente : Francesco Marconi
Progetti Comunitari: Doriana Calilli
Progetto Geo O.S.A.: Studio Ragni

Environmental Observatory Sistem

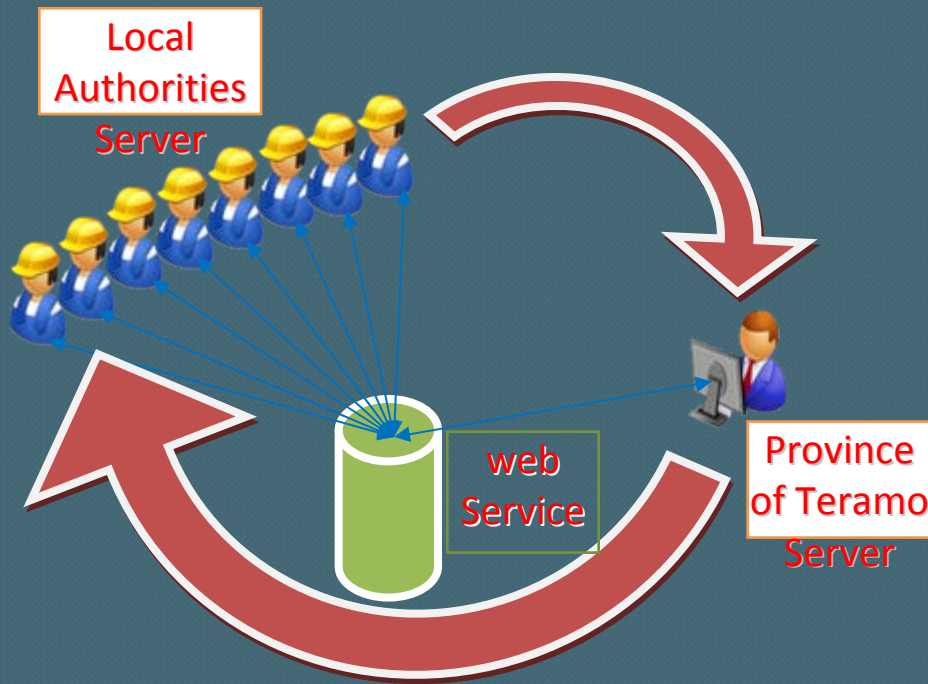
Province of Teramo

How to use Territorial Informational System as means of information

The SIT system use in SUSTAIN's setting has helped to stress, with geographical references, sustainability indicators collected data ("Economics – Environmental Quality – Governance – Social Wellbeing"). Those data have constituted a data-base which allowed to underline overall Province of Teramo various matters. The data-base is mainly made up of flexible data, which are susceptible to time changes, therefore, there is the need of regularly implement and revise data through a partnership among involved authorities to reach this aim. This will produce **an integrated system** for monitoring environmental trends changes. During the past years local authorities have used S.I.T. tools to disseminate their territorial data in internet, but they had dealt with some aspects only, that's to say those regarding their single administration areas. We have information and data concerning town-and-country planning and nothing about overall territorial analysis. It's important to have a standardized system, which would be able to share territorial data from a wider point of view, including all sustainability indicators' sectors. This would be a web-system service.

Environmental Observatory Sistem

Province of Teramo

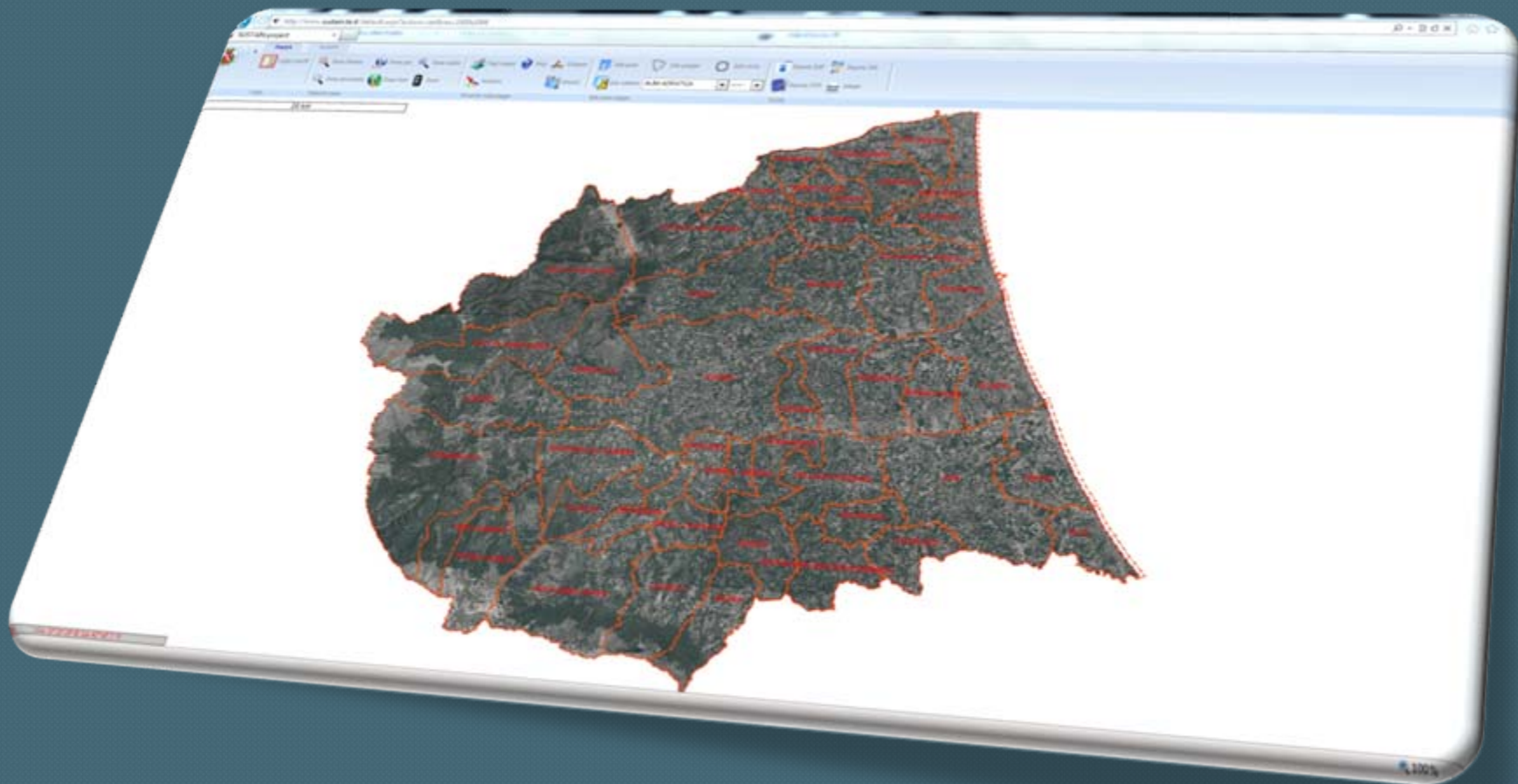


This model describes a "web service", system, that's to say the data sharing chance. The overall use of these technologies (ws, wms, sit) for an overall data sharing in SUSTAIN puts in evidence as collecting territorial data is a complex work because authorities don't use the same way of dealing with these matter. Therefore, we've realized a cartographic portal of the whole provincial territory on following platforms:

- A) Web;
- B) Win-desktop to be used by all public authorities to compare territorial informational data.

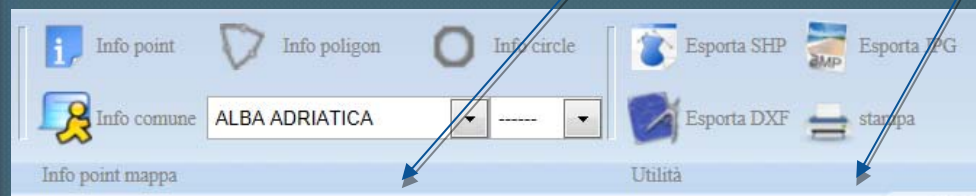
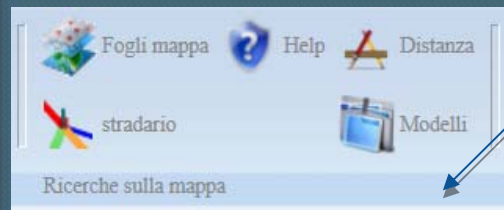
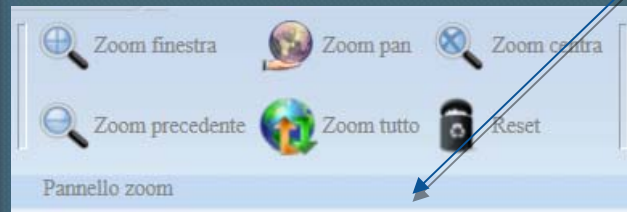
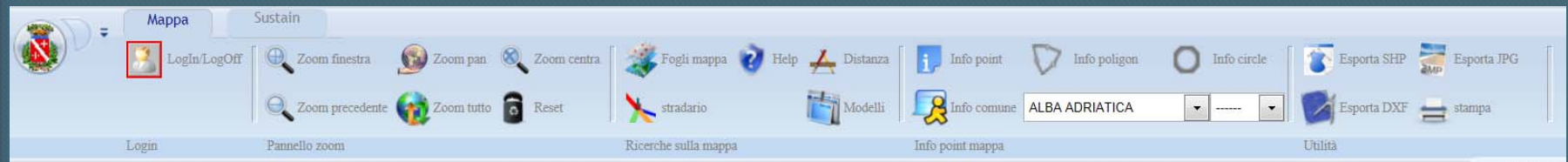
Environmental Observatory Sistem

Province of Teramo



Environmental Observatory Sistem

Province of Teramo



Start LOGIN panel

Screen Management

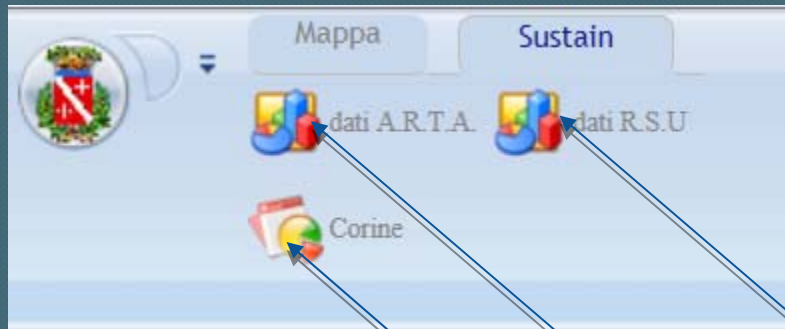
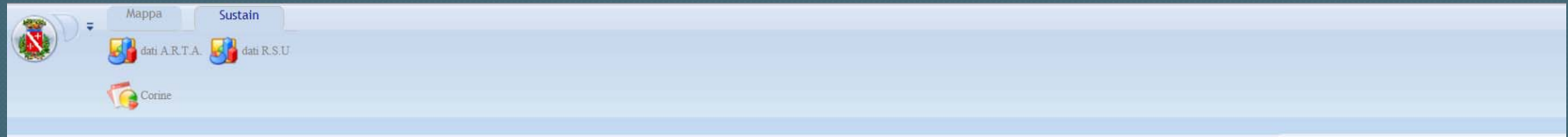
Map levels management

Map Information

Map Utilities

Environmental Observatory Sistem

Province of Teramo



Sustain Panel to identify territorial critical situations

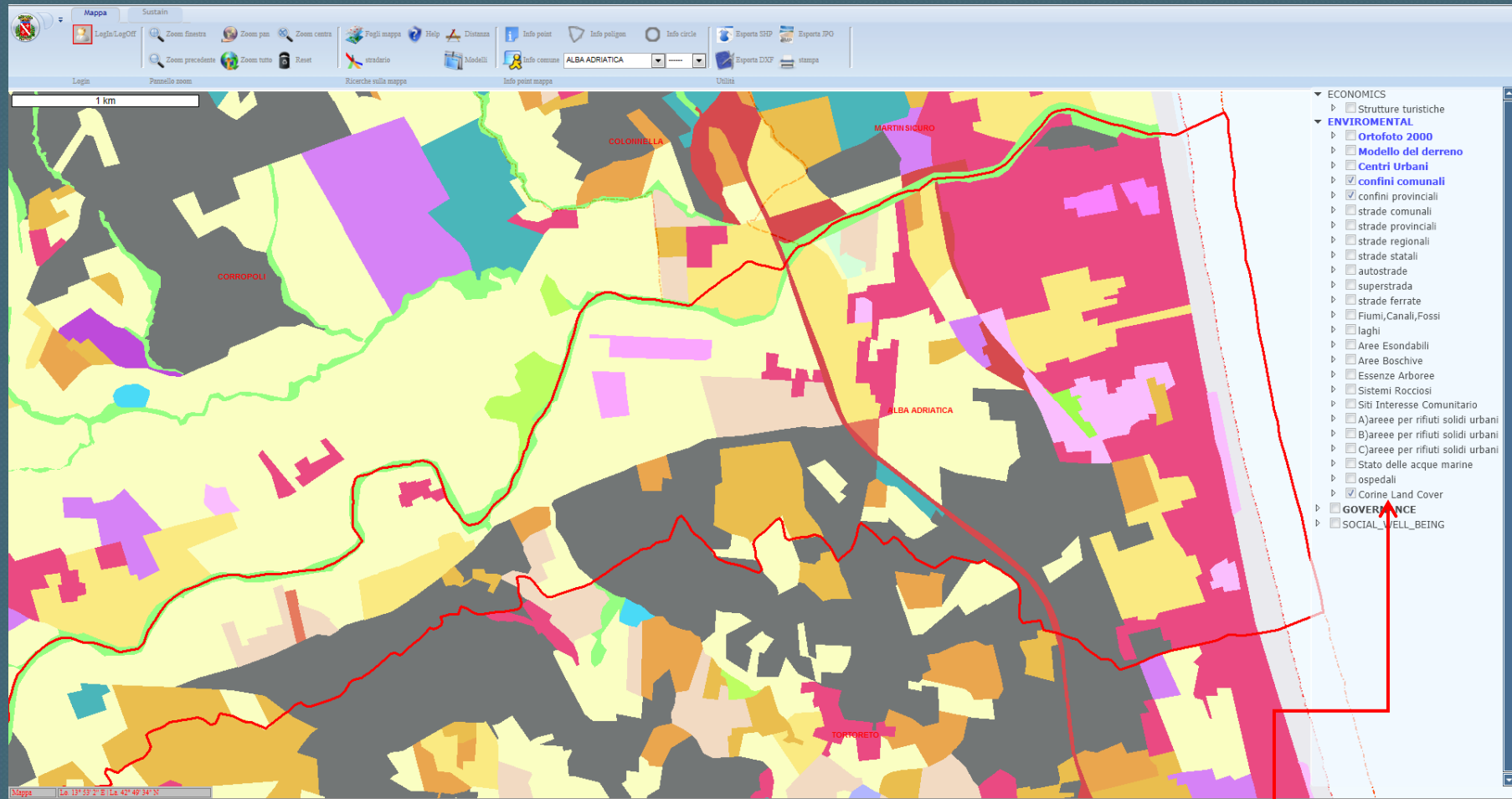
Urban Waste Collection Data

Water Analysis Data (ARTA)

Land Use Data

Environmental Observatory Sistem

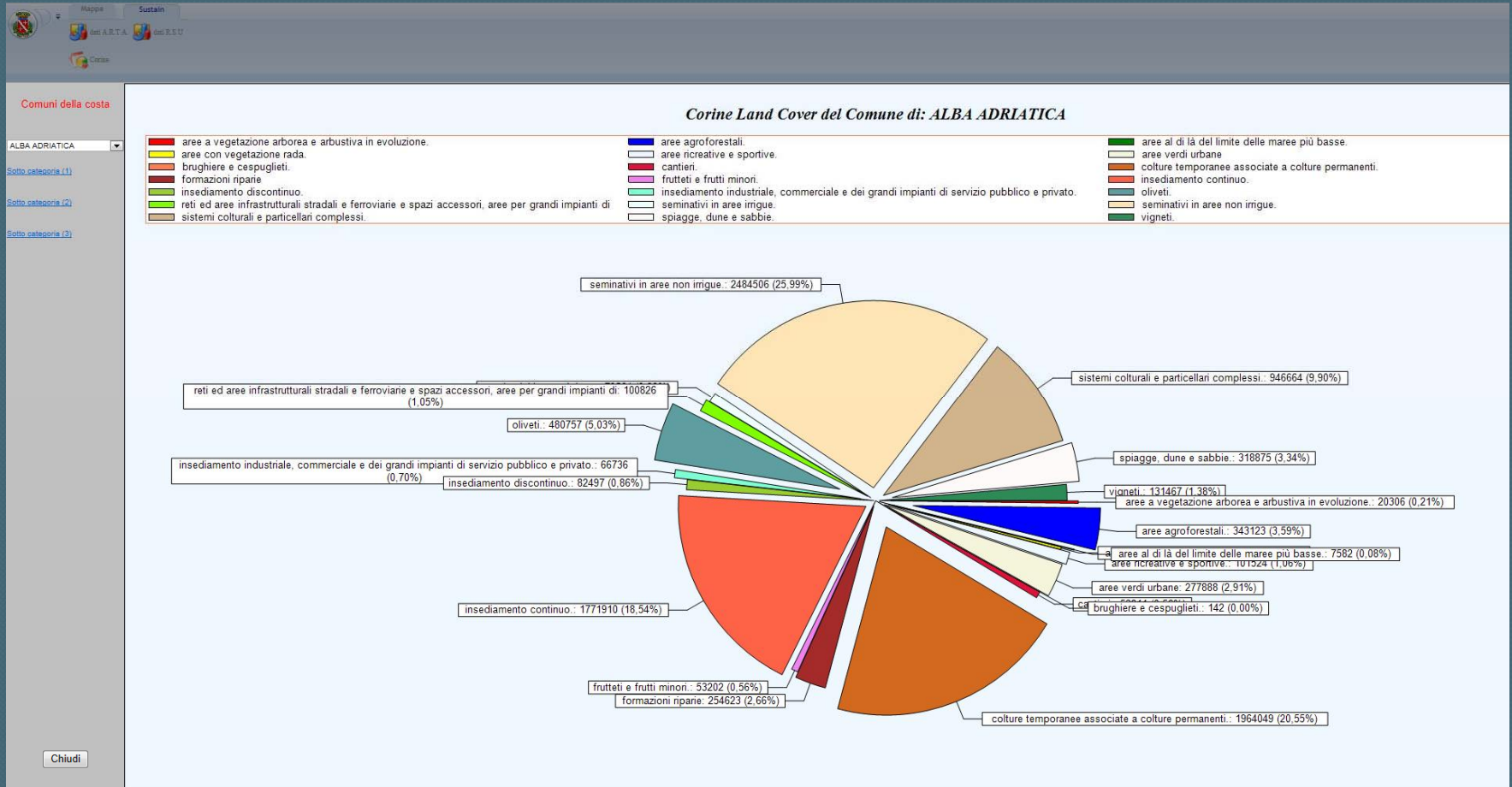
Province of Teramo



Land Use: geographic map sheet implementation (Corine Land Cover)

Environmental Observatory Sistem

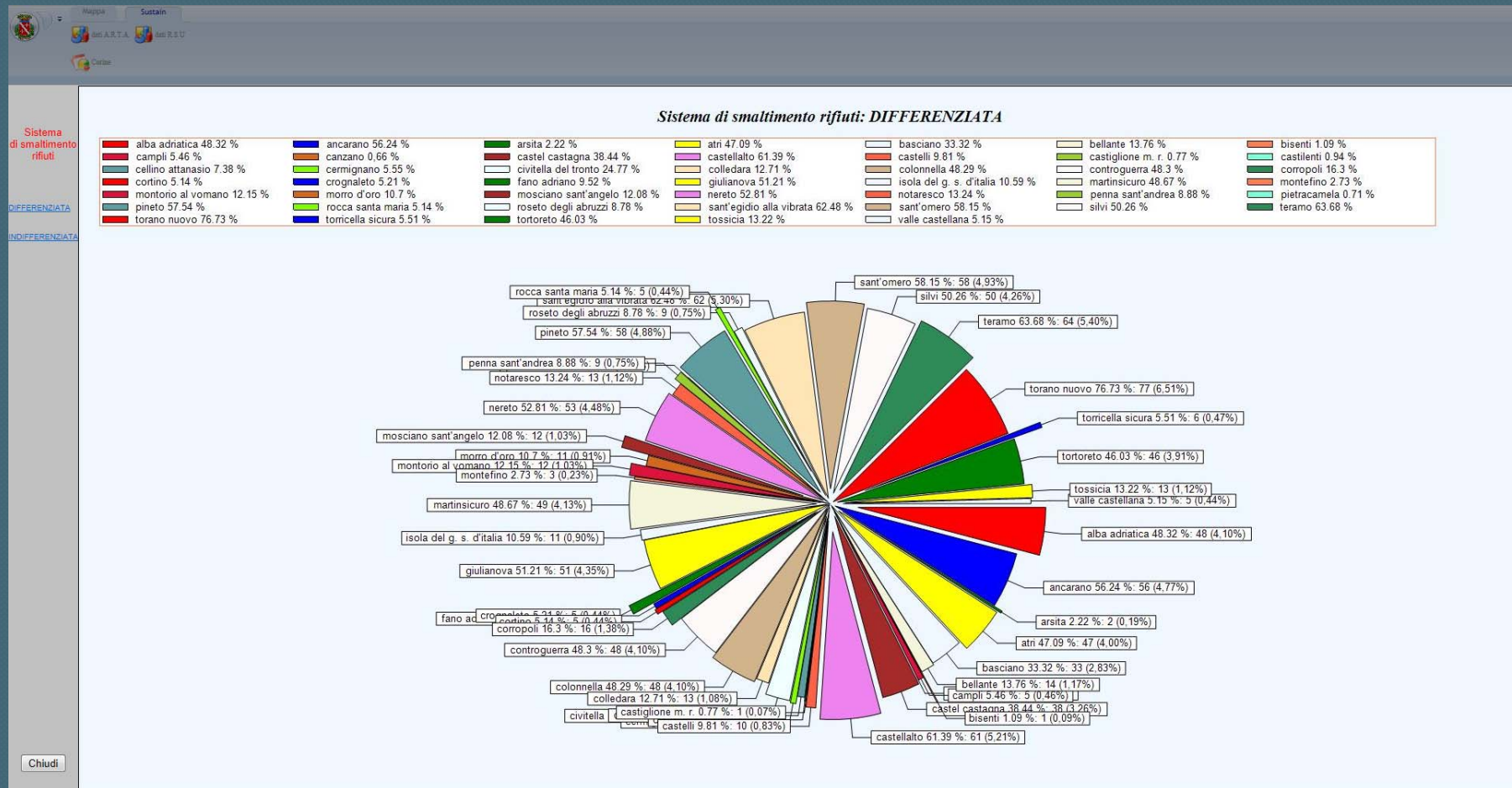
Province of Teramo



Land Use: selected territory data % (Corine Land Cover)

Environmental Observatory Sistem

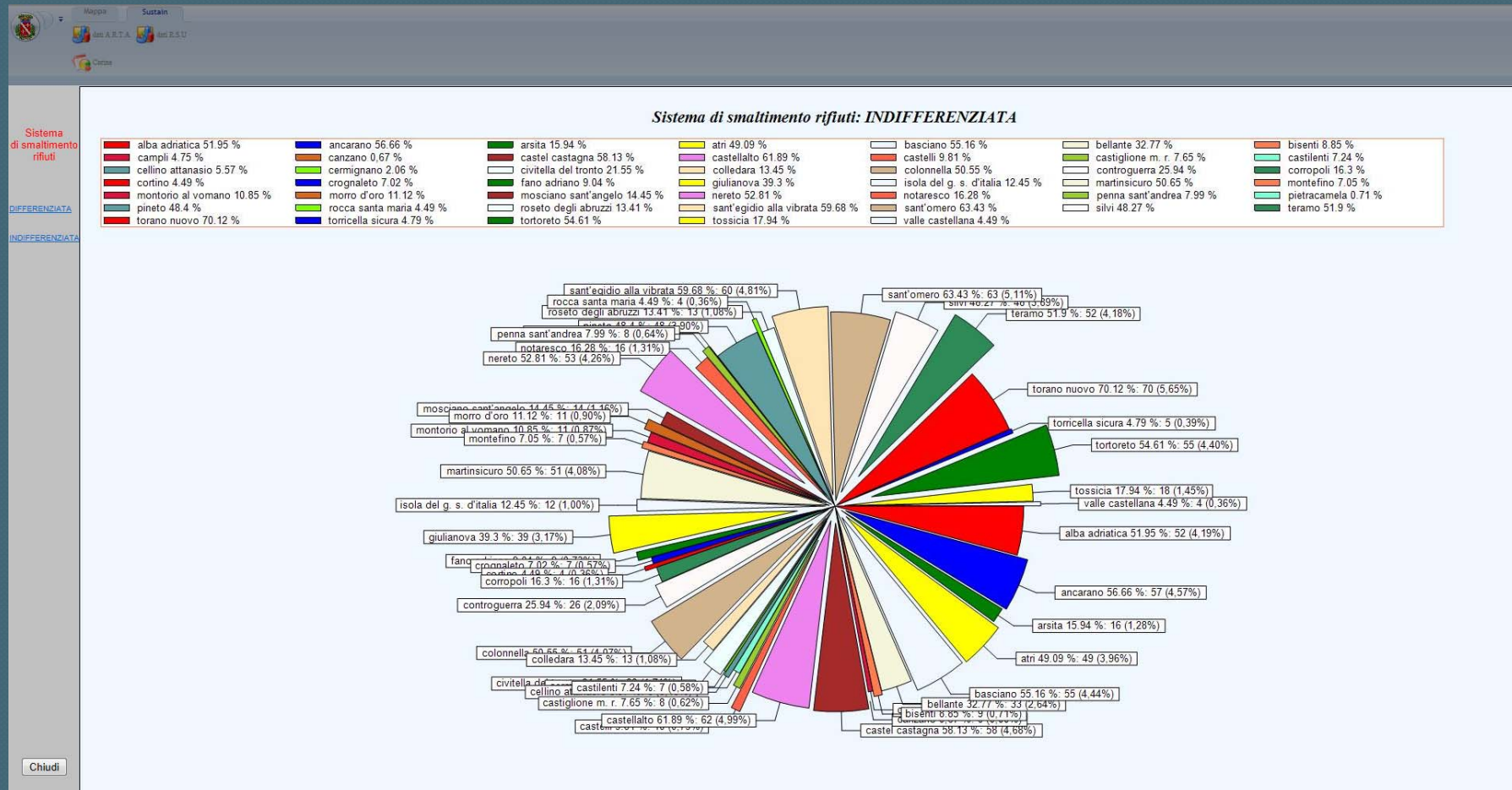
Province of Teramo



Waste Disposal System: (differentiated) % data of provincial territory

Environmental Observatory Sistem

Province of Teramo



Waste Disposal System: (Indifferentiated) % data of provincial territory

Environmental Observatory Sistem

Province of Teramo

Info point Info poligon Info circle Esporta SHP Esporta IPG
Info comune ALBA ADRIATICA Esporta DXF stampa
Info point mappa Utilità

Info on the selected territory

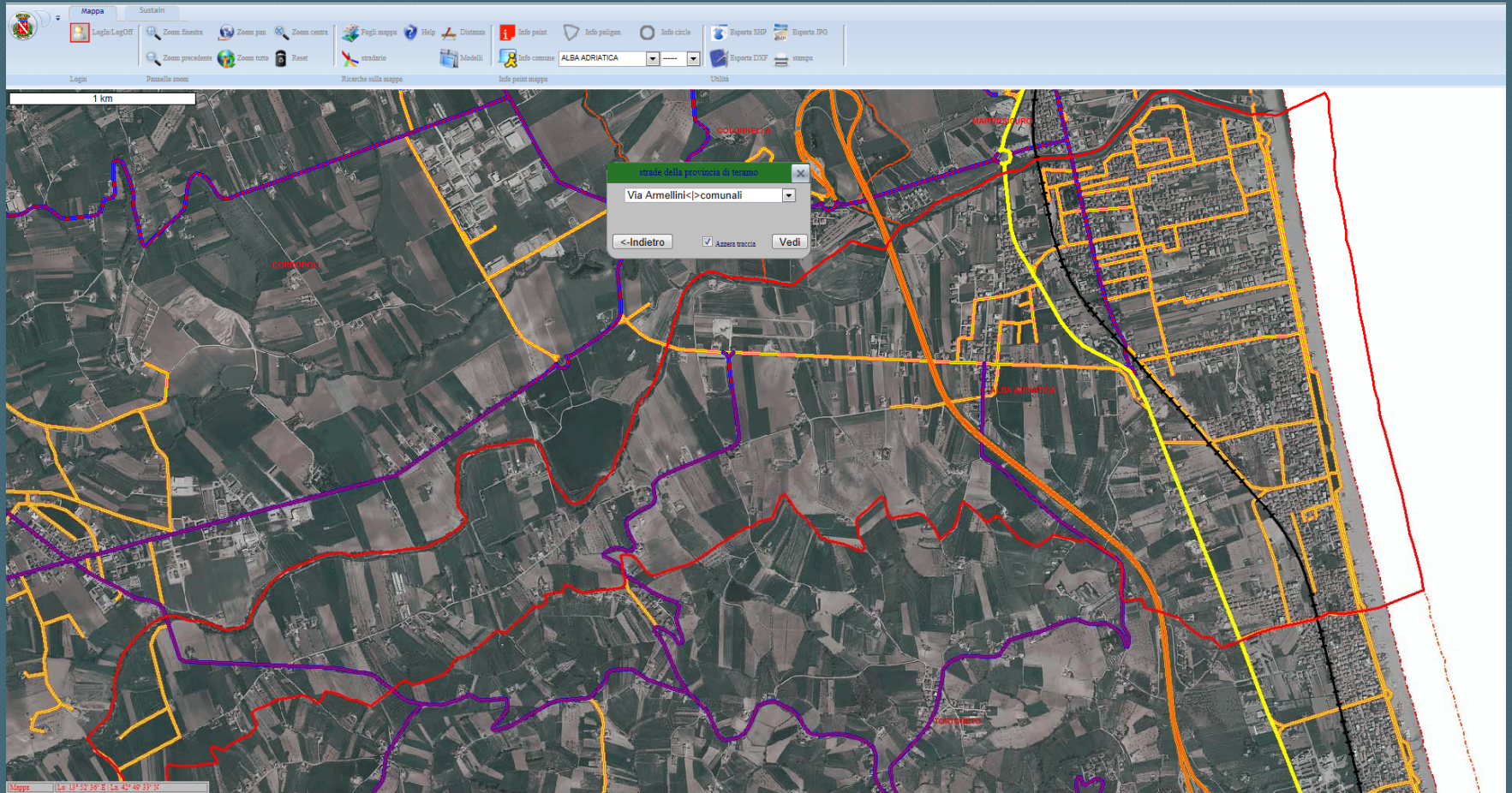
ALBA ADRIATICA Sup.-9.589.372,84 Abitanti:12.522,00 Altitudine:5,00 OK

Fattoria Mare	TURISTICO
La costa teramana premiata con sette Bandiere Blu	TURISTICO
Lidia	TURISTICO
Xenia	TURISTICO
Gallery	TURISTICO
Il Glicine	TURISTICO
Alba Adriatica	TURISTICO
Astor	TURISTICO
Esperia	TURISTICO
Villa Cesare	TURISTICO
Alb s	TURISTICO
Antares	TURISTICO
Polite	TURISTICO

Information panel of the selected territory

Environmental Observatory Sistem

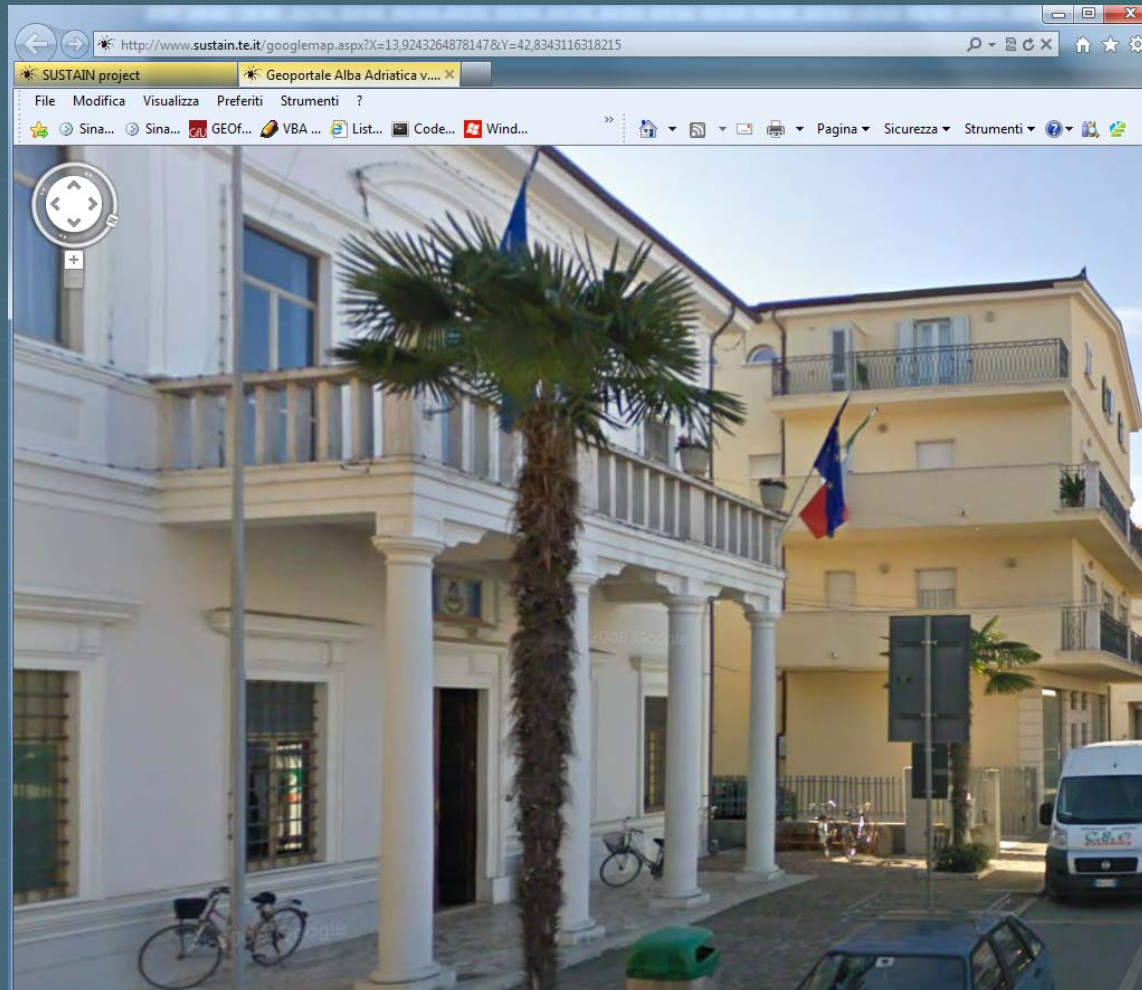
Province of Teramo



Province of Teramo road network model

Environmental Observatory Sistem

Province of Teramo



Geolocation on google street view platform

Environmental Observatory Sistem

Province of Teramo

Conclusion

The implementation of an integrated environmental management system requires, first of all, the Governance awareness of giving a vigorous support to sustain the effort to keep it dynamic. A regular environmental planning will produce an increasing suggestive, operational and decision making about strategies to be implemented in order to improve and protect the whole provincial territory.

THANK YOU FOR YOUR ATTENTION !