

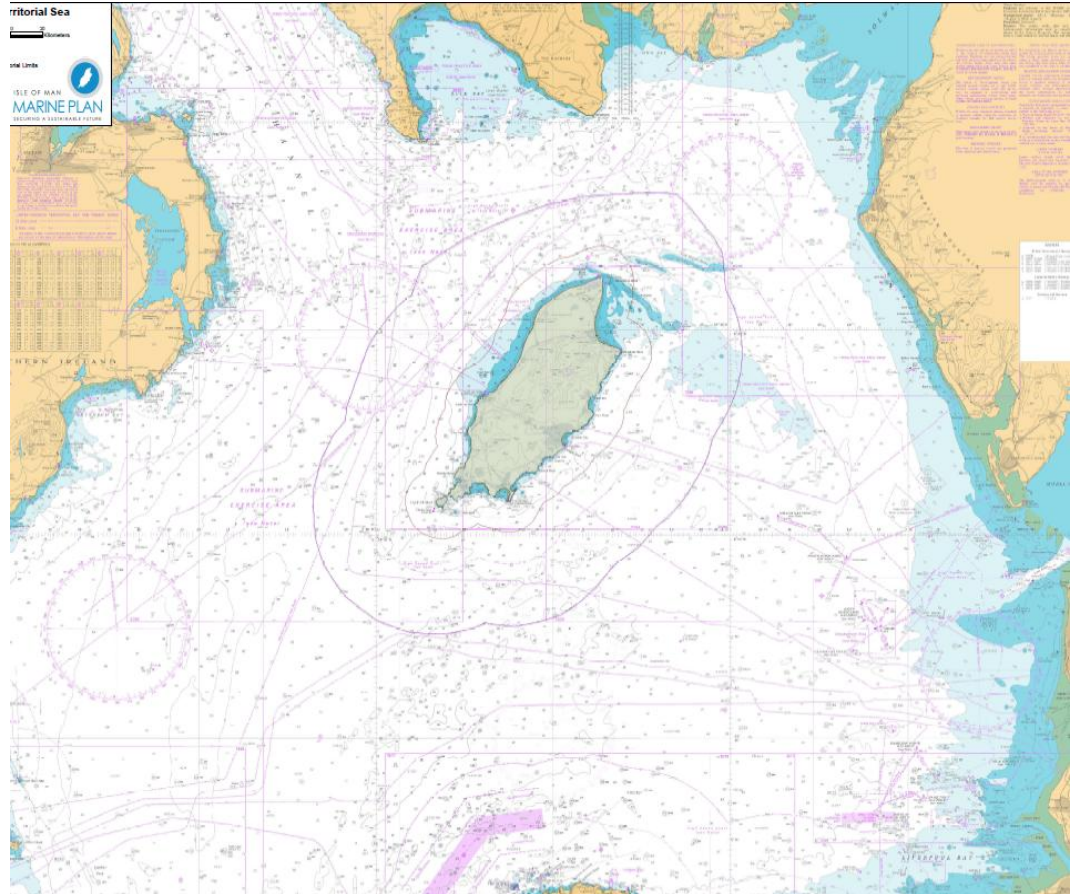


Developing a Marine Plan for the Isle of Man

Liz Charter
Chairman of the Marine Spatial Planning Officer Group
Isle of Man Government

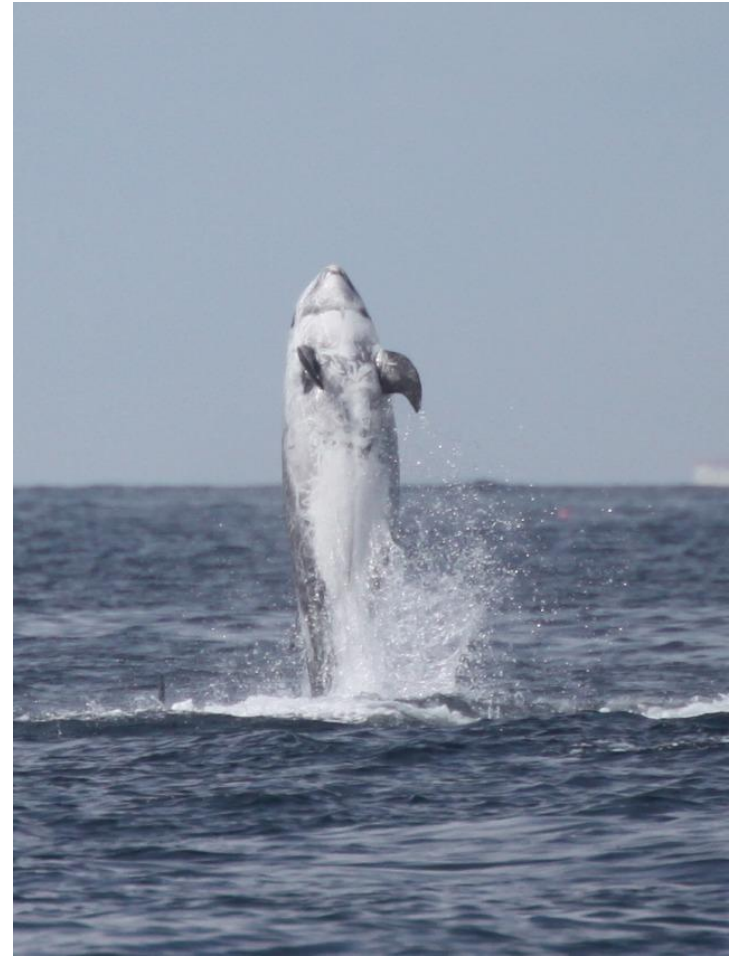
The Isle of Man

- ☐ Constitution
- ☐ Not in EU
- ☐ Signed up to Conventions
- ☐ Collaborate through BIC



Conventions

- ❑ OSPAR (was Oslo and Paris Agreement – now extended to NE Atlantic)
- ❑ Bonn Migratory Species – Agreement on Small Cetaceans (ASCOBANS)
- ❑ Ramsar wetland convention (shallow sea)
- ❑ Convention on Biological Diversity (requested)



Isle of Man
Government
Reillys Ellan Vannin



ISLE OF MAN
MARINE PLAN
SECURING A SUSTAINABLE FUTURE

Involvement with Irish Sea

- ❑ Irish Sea Forum
- ❑ Irish Sea Pilot
Regional Seas
- ❑ Irish Sea Regional
Platform (Interreg bid)
- ❑ Irish Sea
Conservation Zone
and now....
- ❑ Irish Sea Maritime
Forum



Isle of Man
Government

Reillys Ellan Vannin



ISLE OF MAN
MARINE PLAN
SECURING A SUSTAINABLE FUTURE

Isle of Man Marine Plan

- ❑ Cross government project (3 depts)
- ❑ 3 years to develop (start of last year)
- ❑ Address how we give consent
- ❑ Bring together government policies for the sea
- ❑ Follow best practice MMEA and EIA
- ❑ Consult surrounding jurisdictions



Isle of Man
Government
Reillys Ellan Vannin

Principles of the Marine Plan

- ❑ Enabling sustainable economic development
- ❑ Based on the ecosystem approach
- ❑ Developed in a joined up way by the Manx government
- ❑ Inclusive of stakeholders
- ❑ Irish Sea context with transnational co-operation



Isle of Man
Government
Reillys Ellan Vannin



ISLE OF MAN
MARINE PLAN
SECURING A SUSTAINABLE FUTURE

Options for consenting process

- ❑ Status Quo – decision via Territorial Seas Committee
- ❑ Development of Primary Legislation for a consenting process for marine developments and provision to develop a Statutory Marine Spatial Plan
- ❑ Development of Secondary Regulations under existing Primary Legislation



Current Consenting Process

- ❑ Application for seabed lease submitted to Chair of Territorial Seas Committee (Director of Harbours)
- ❑ Application circulated to members of Territorial Seas Committee for consideration
- ❑ Comments reported to Chair by members for consideration
- ❑ Recommendation to Minister for Department of Infrastructure from Chair
- ❑ Ministerial decision on the agreement (or not) for lease of seabed



Isle of Man
Government
Reilrys Ellan Vannin



Manx Marine Environmental Assessment

- ☐ Based on a Regional Environmental Assessment
- ☐ Collating all relevant information
- ☐ Consultation July/August 2012
- ☐ Map based information
- ☐ Completion by October 2012



AIM to bring together the baseline information currently available for Manx territorial waters.

covering

- ☐ Physical environment
- ☐ Marine renewable energy opportunities
- ☐ Commercial fisheries
- ☐ Infrastructure
- ☐ Legislation
- ☐ Marine habitats and species



**Isle of Man
Government**

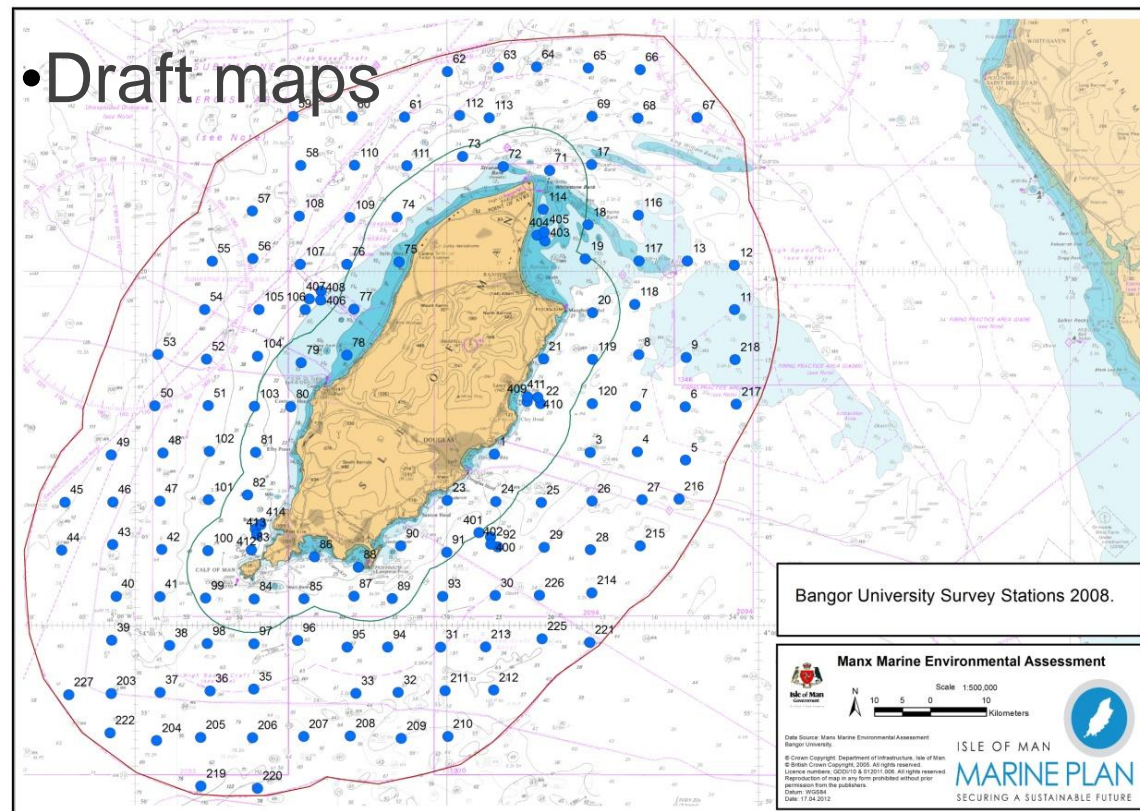
Reiltsys Ellan Vannin



ISLE OF MAN
MARINE PLAN
SECURING A SUSTAINABLE FUTURE

Seabed ecology

Points surveyed by Bangor University for the identification of seabed habitats and associated animal communities.



7,325 still images from 150 survey points have been analyzed.

NB: Locations of more recent survey work is not included on this map.

Government

Reilrys Ellan Vannin

Marine Economic Assessment

- ☐ Blue carbon, CO₂ sequestration
- ☐ Marine bird and wildlife watching and wildlife holidays
- ☐ Role of coast and nature in holiday making decisions
- ☐ Commercial and leisure fisheries
- ☐ Yachting
- ☐ Coastal protection



Isle of Man
Government
Reillys Ellan Vannin



ISLE OF MAN
MARINE PLAN
SECURING A SUSTAINABLE FUTURE

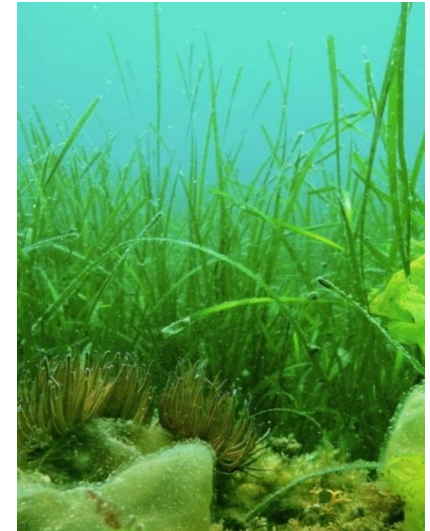
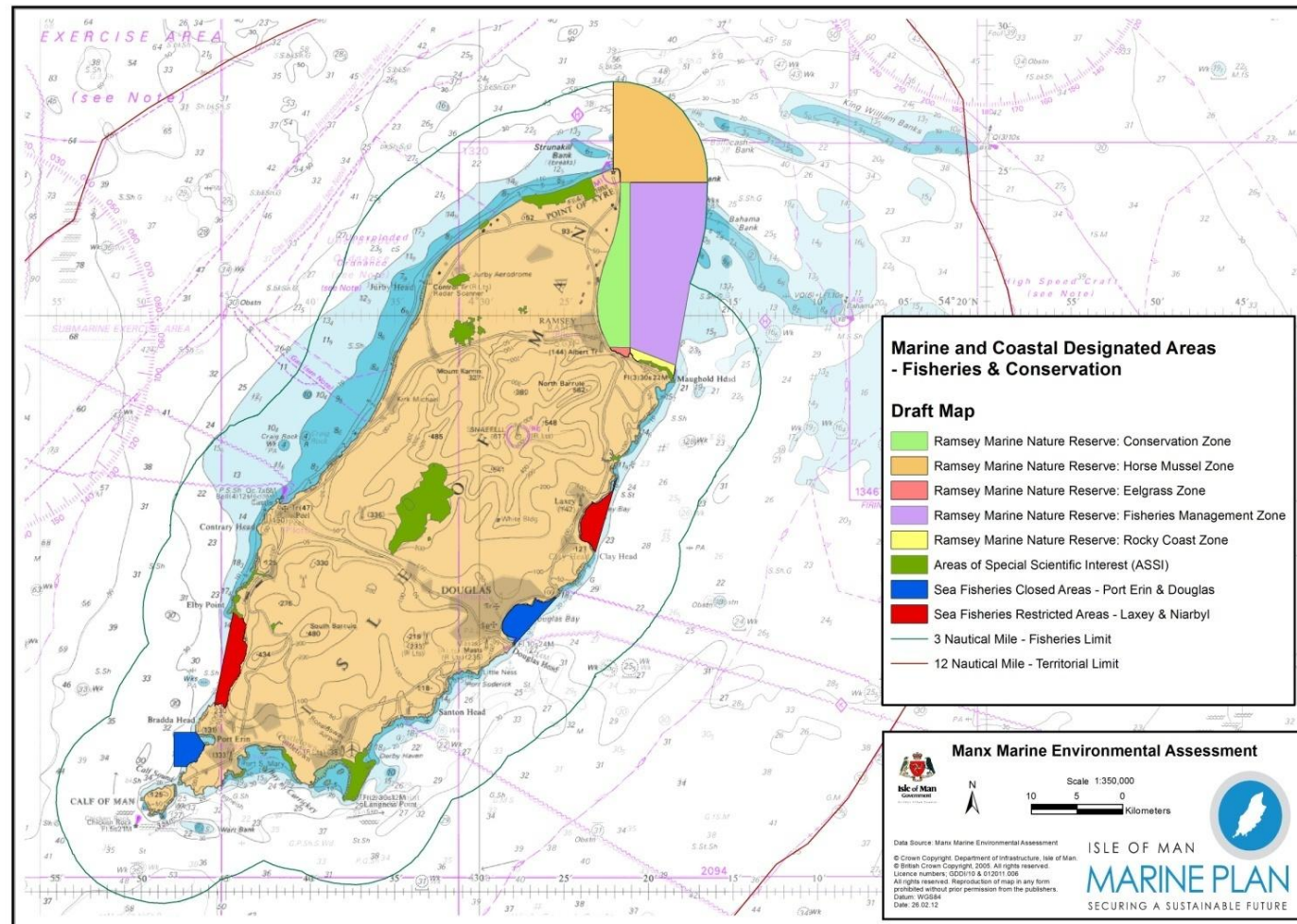
Transboundary issues

- ❑ Co-ordination (eg consistent requirements for post-development monitoring)
- ❑ Communication and consultation over policies and plans
- ❑ Conflicts of interest (wind turbines and ferries, fisheries and unburied pipelines)
- ❑ Complementarity and collaboration (eg designation of cross boundary ecological features)

Statutory designations

Fisheries and conservation areas

Draft map



Ramsey Marine Nature Reserve

- ☐ Eelgrass Zone (pink)
- ☐ Horse Mussel Zone (orange)
- ☐ Conservation Zone (green)
- ☐ Fisheries Management Zone (purple)
- ☐ Rocky Shore Zone (lime green)

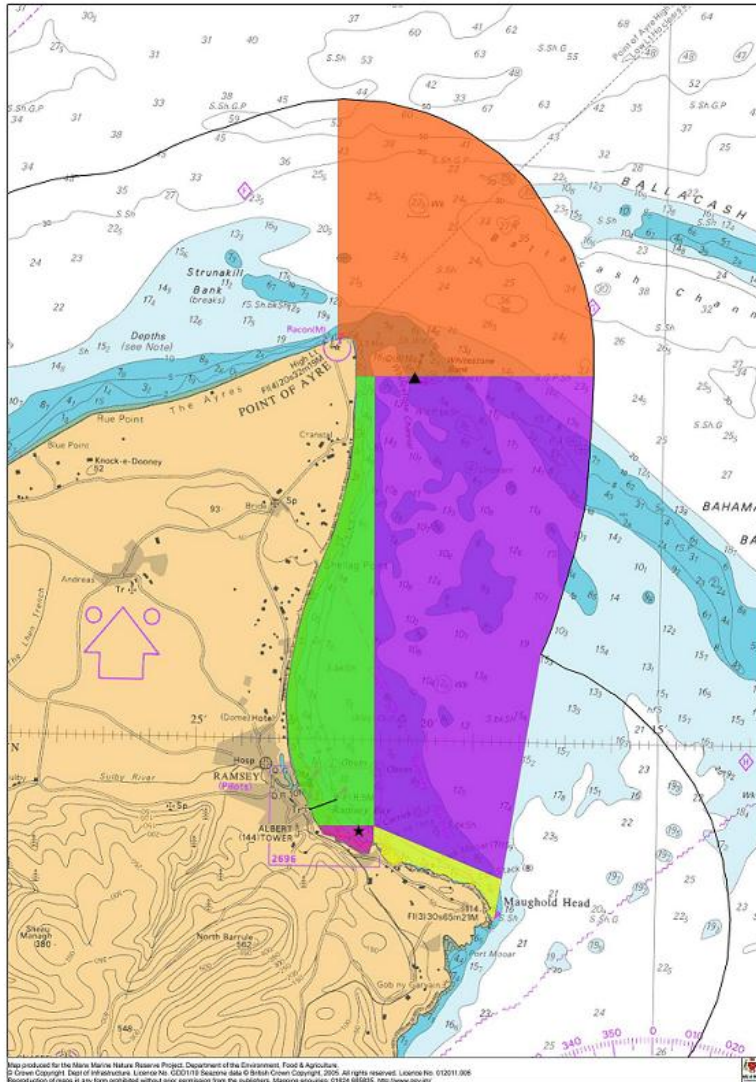
Total area = 94.5km²

Highly protected = 47km²

Fisheries Management Zone = 47.5km²

Whole area = 2.4% of Manx Waters

Highly protected area = 1.2% of Manx Waters



Isle of Man
Government

Reilrys Ellan Vannin

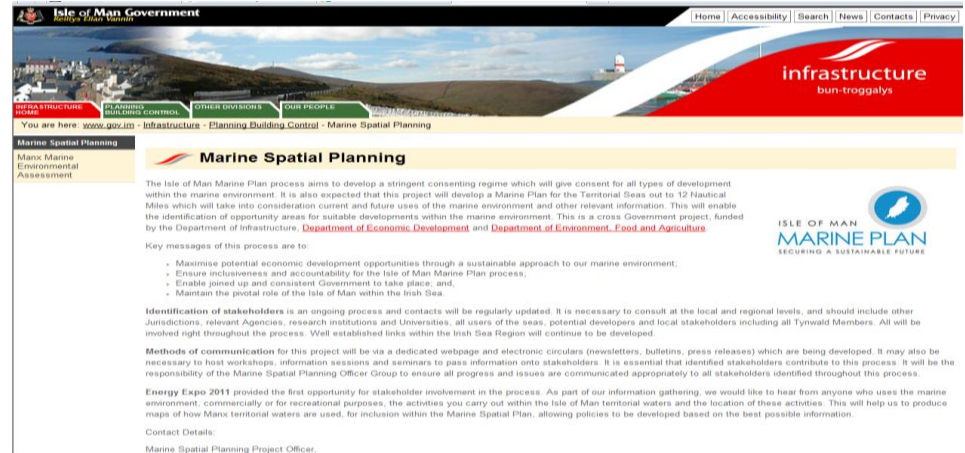


ISLE OF MAN
MARINE PLAN
SECURING A SUSTAINABLE FUTURE

Further information

www.gov.im/transport/planning/marinespatialplanning

Email project officer on msp@gov.im



MMEA consultation (from mid July)

<http://www.gov.im/transport/planning/mmea.xml>

Liz.charter@gov.im



**Isle of Man
Government**

Reiltys Ellan Vannin



ISLE OF MAN
MARINE PLAN
SECURING A SUSTAINABLE FUTURE